



Keep Calm and Get Dirty!
Hands on Workshops

Background

Los Angeles **Green New Deal**

- Source 70% of L.A.'s waters locally by 2035
- Reduce GPCD by **22.5%** by 2025 and **25%** by 2035

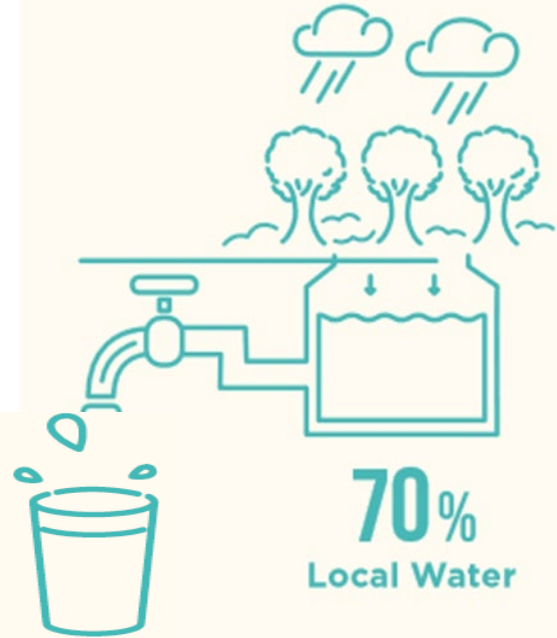
Reduce Potable Water Use

22.5%

By 2025

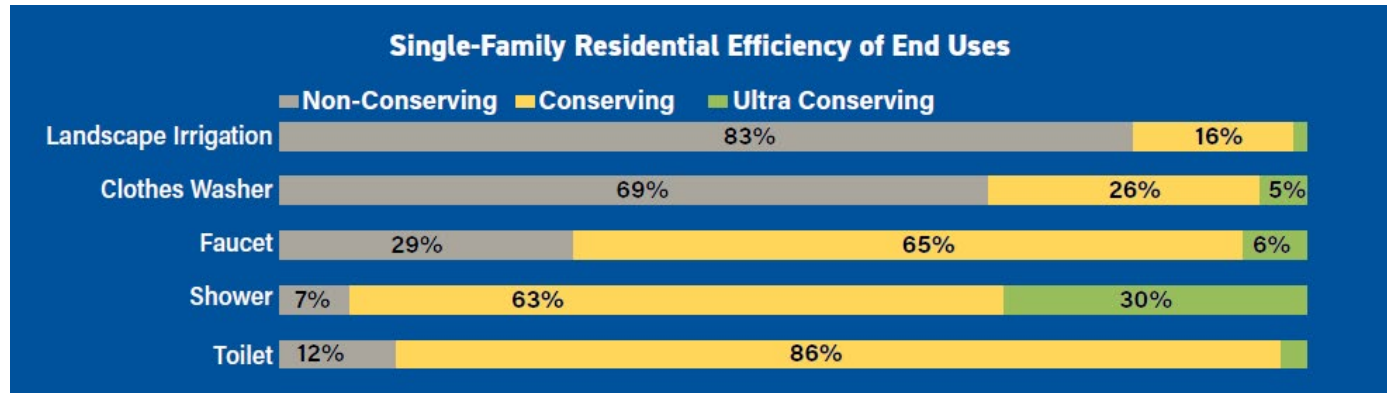
25%

By 2035



LADWP's Potential Study

- Largest conservation potential in landscape irrigation
- 83% homeowners have turf-heavy landscapes
- Focus needs to be on providing further resources to customers to complete turf replacement projects

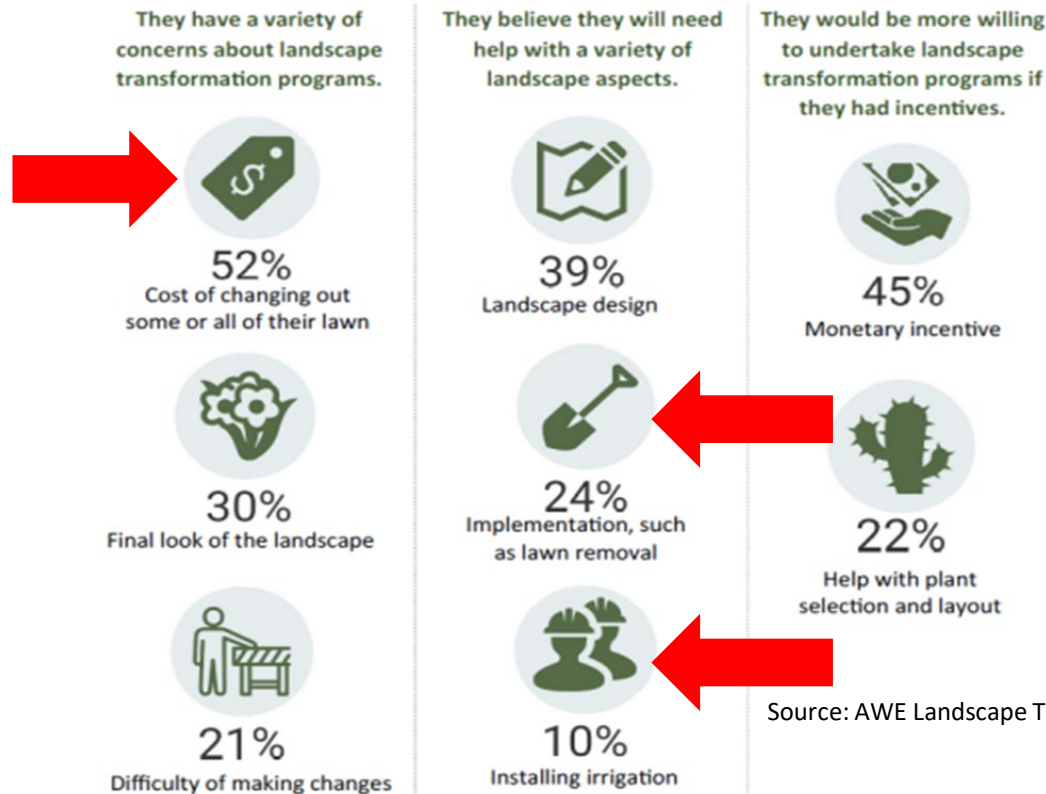


LADWP Turf Replacement Rebate

- Rebate is \$3/square foot
- If customer applied for rebate:
 - i.e. 800 sq ft x \$3/sq foot = \$2400
- Requirements include:
 - 3 plants/100 sq ft
 - No artificial turf
 - Rain water capture technique
 - Only drip irrigation allowed



Alliance for Water Efficiency - Landscape Transformation Study



Source: AWE Landscape Transformation Study 2018

ladwp.com

Community Partnership Grants

LAWN BE GONE!



Want to save water?
Ready to tear out your lawn?
Don't know where to start?



We're offering FREE Hands on Workshops (HOWs) where you will learn HOW to:

- Tear out turf without chemicals
- Capture rain water
- Build healthy living soil
- Plant California native plants

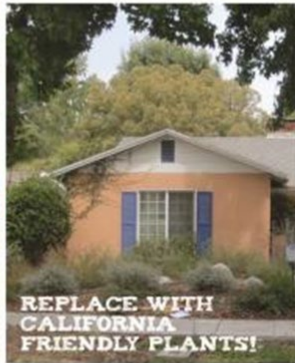
- 1) **HOST** a workshop and receive Lawn Be Gone services at a reduced rate, or
- 2) **ATTEND** a free workshop and learn how to create an ecogarden.

Added bonus: All attendees will receive a discount coupon for EcoGardens services.

Sunday, June 12 & Saturday, June 18 from 10am - 3pm
3670 Westwood Blvd, Los Angeles, CA 90034
Register at <http://selvainternational.org/lawnbegone>



**REMOVE WATER
GUZZLING TURF!**



**REPLACE WITH
CALIFORNIA
FRIENDLY PLANTS!**



Hands on Workshops (HOWs)

- June 2019 – Start of LADWP HOWs



Goals

- Attendees will feel comfortable initiating a DIY project or better able to assess quotes from installers
- Hosts will influence neighbors, communities and social circles to elicit change



Flyer Recruitment



Host a Hands on Workshop to:

- » Remove turf and install sustainable landscaping in your front yard at no cost to you
- » Give you neighbors and community members hands-on experience with turf replacement
- » Capture rain water and install California-friendly and native plants
- » Save water and money

Hands on Workshop hosts receive a free California friendly garden!

Sign Up!

Register to **host**
a workshop at:

www.LawnBeGoneDWP.com



As a covered entity under Title II of the Americans with Disabilities Act, the City of Los Angeles does not discriminate on the basis of disability as it upon request, will provide reasonable accommodation to ensure equal access to its programs, services and activities.



Attend a Hands on Workshop and learn how to:

- » Remove turf and install sustainable landscaping
- » Incorporate low water use California Friendly and native plants
- » Capture rain water
- » Save water and money

June 15th and
June 22nd

9:00 a.m.
- 1:00 p.m.

Mar Vista

Sign Up!

Register to **attend**
a workshop at:

www.LawnBeGoneDWP.com



As a covered entity under Title II of the Americans with Disabilities Act, the City of Los Angeles does not discriminate on the basis of disability as it upon request, will provide reasonable accommodation to ensure equal access to its programs, services and activities.



ladwp.com

Host Requirements

- Must own property and be serviced by LADWP
- Access to front yard (no fence, gated community)
- **500 – 1,500** square feet of living turf
- Must not have been prior turf rebate recipient
- Must not have hosted previous HOW
- Ability to maintain garden for at least 5 years
- Existing, working automated irrigation system
- Room for 20-30 participants
- Accessible restroom on site

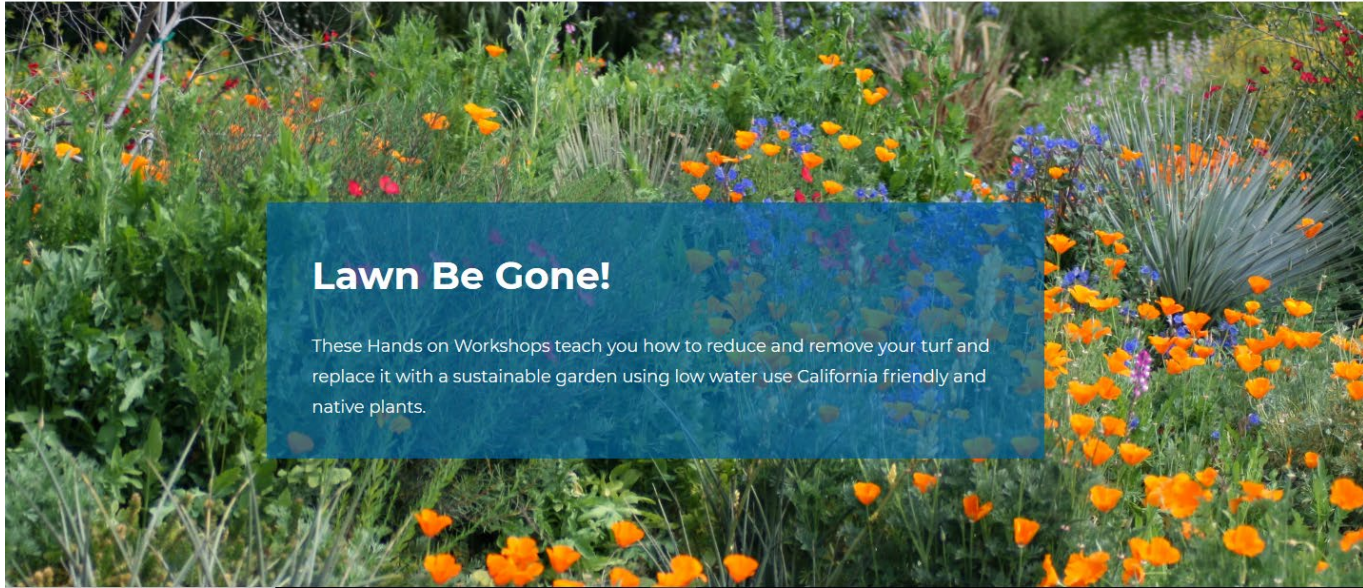


www.lawnbegonedwp.com



Home [Attend](#) [Host](#) Resources Contact Us

[Español](#)



Lawn Be Gone!

These Hands on Workshops teach you how to reduce and remove your turf and replace it with a sustainable garden using low water use California friendly and native plants.



ladwp.com

Ladwp.cafriendlylandscaping.com

[Home](#)[Gardens](#)[Plants](#)[My List](#)[Resources](#)[Watering Guide](#)[Prev](#)[Next ▶](#)

Search Criteria: Plant Type: Annuals | Sun: Any | Height: Any | Flower Color: Any | Water Requirement: Any

page 1 of

[A](#) [B](#) [C](#) [D](#) [E](#) [F](#) [G](#) [H](#) [I](#) [J](#) [K](#) [L](#) [M](#) [N](#) [O](#) [P](#) [Q](#) [R](#) [S](#) [T](#) [U](#) [V](#) [W](#) [X](#) [Y](#) [Z](#)



American or African Marigold



Annual Phlox



Annual Strawflower, Everlasting



Annual Sweet Pea



Arctotis Daisy, African Daisy



Argentine Verbena



Arroyo Lupine



Baby Blue Eyes



Ladwp.cafriendlylandscaping.com



Ladwp.cafriendlylandscaping.com

Plants

Gardens

Common Name	Botanical Name	Water Needs
Anacapa Island Pink Morning Glory	Calystegia 'Anacapa Pink'	Low
Baby Blue Eyes	Nemophila menziesii	Low
Chalk Dudleya, Chalk-Lettuce	Dudleya pulverulenta	Very Low

Printable Reports

[Hydrozones](#)[All Pictures](#)[Plant Details](#)[Plant List](#)

Description

This climbing shrub has bright green leaves with dark red flowers that bloom in spring and summer.



All Hands Design/Install Team Meeting



Hands on Workshop #8
All Hands Design/Install Team Meeting
Berlin-Cammack Residence

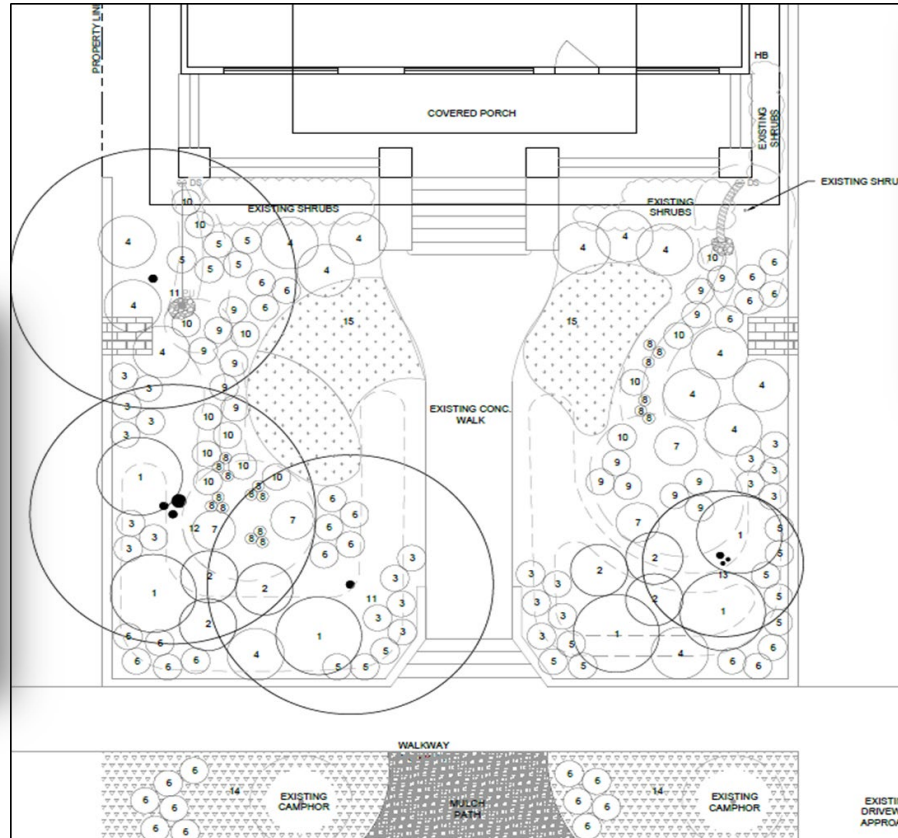
- Review Site Plan
 - Confirm key elements (downspouts, planting areas, controller location, etc.)
- Determine/confirm depth and location of water main line
- Check for leaks with all appliances turned off
- Locate gas line (this will be done again after DigAlert is called)
- Conduct a soil moisture/drainage test
- Review staging areas, dumpster access
- Determine location of rainwater capture elements as proposed by designer
- Review downspout redirect strategy
- Discuss grading plan
- Discuss irrigation
 - Confirm lateral lines, controller, pressure regulation, shut-off valve, manifold locations
- Raise potential issues or challenges and discuss with entire team
- Complete photo documentation

Plant List

SYM	QTY	SIZE	SPAC.	FORM	BOTANICAL NAME	COMMON NAME	PLANT FACTOR	DIMENSION H'X W' (MATURITY)	H	W	SUN	D/E/S	FLOWER COLOR	CA NATIVE
1	6	1 gal		shrub	Ceanothus 'Concha'	CA Mountain Lilac	Low	6' x 6'	6' - 8'	6' - 8'	Full Sun	E	Dark Blue	Y
2	6	1 gal		shrub	Galvezia speciosa	Island Snapdragon	Low	2.5' x 4'	2.5'	4'	Full Sun/Shade	E	red	Y
3	21	1 gal		perennial	Achillea millefolium moonshine	Yarrow	Low	3' x 2'	3'	2'	Full Sun	Semi E	Yellow	Y
4	20	1 gal		shrub	Eriogonum rubescens	San Miguel Island buckwheat	Low	2' x 3'	2'	3'	Full Sun	E	Pink	Y
5	30	1 gal		perennial	Penstemon heterophyllus 'Margarita BOP'	penstemon	Low	3' x 2'	3'	2'	Full Sun	Semi E	Blue Violet	Y
6	16	1gal		perennial	Achillea millefolium 'Sonoma Coast'	White yarrow	Low	3' x 2'	3'	2'	Full Sun	Semi E	White	Y
7	4	1 gal		perennial	Anemopsis californica	yerba mansa	Med	1' x 2'	1'	2'	Full Sun/Part Shade	Semi E	Cream	Y
8	18	1 gal		bulb	Zephyranthes	Rain lily (any color - divided 4/1 gal)	Med	1' x 2'	1'	2'	Full Sun/Shade	Dec	White/Yellow	N
9	15	1 gal		perennial	Iris douglasiana	Douglas iris	Med	2'x 3'	2'	3'	Full Sun/Part Shade	Semi E	Various	Y
10	9	1 gal		grass	Lomandra longifolia 'Breeze'	Dwarf mat rush	Low	3' x 4'	3'	4'	Full Sun/Shade	E	Yellow	N
11	1	15 gal		tree	Platanus racemosa Multi-stem	California sycamore	Med	40' x 30'	40'	30'	Sun	D	NA	Y
12	1	15 gal		tree	Platanus racemosa Standard	California sycamore	Med	40' x 30'	40'	30'	Sun	D	NA	Y
13	1	15 gal		tree	Lagerstroemia indica	Crape Myrtle	Med	15' x 15'	15'	15'	Sun	D		N
14	208 sq. ft.	1 gal	6" o.c.	ground cover	Phyla nodiflora	Kurapia	Low	<1'	<1'		Full Sun	E	white	Y



Design Plans



Design Meetings

Hands on Workshop #7 Preliminary Design Meeting

- Review overall objective of the turf transformation and garden design
- Review garden style preferences
- Review recommended planting palette
- Discuss placement of rainwater capture elements and locations of new downspouts
 - Landscape placement, downspout redirection, estimated quantity of rainwater captured, design parameters
- Confirm which plants/elements are to be removed
- Review placement and description of the irrigation system
- Discuss the necessity for irrigating thoroughly up until the time of the HOW
- Review property owners' participation in promotion for the HOW
- Review logistics for installation/HOW work days
- Review restrictions on construction post installation

I confirm that G3 discussed with me the topics listed above, that I understand them, and that I received the LBG_HOW Preliminary Design attached here. I approve this design (with noted amendments) for G3 to move forward with construction drawings.



Date



ladwp.com

Learning Objectives



Day 1

- Principles of a California Friendly Landscape
- Turf Removal
- Contouring for rainwater
- Sheet mulching for healthy soil sponge

Day 2

- Plant selection considerations
- Proper planting technique
- Drip irrigation principles
- Explanation of design elements



Day 1

- Removal of turf with sod cutter
- Contour for rainwater
- Sheet mulching



Day 1

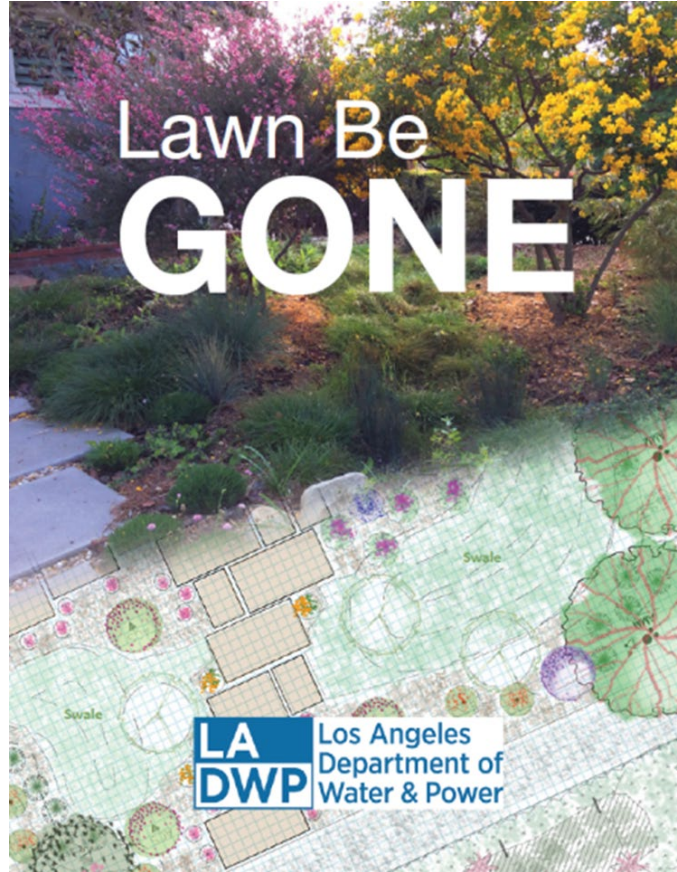


Day 2

- Plant selection and proper planting techniques
- Design discussion
- Drip irrigation model



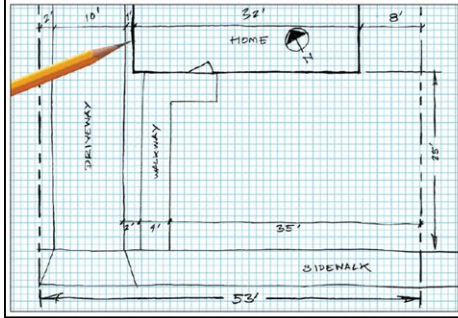
Hands on Workshop Curriculum



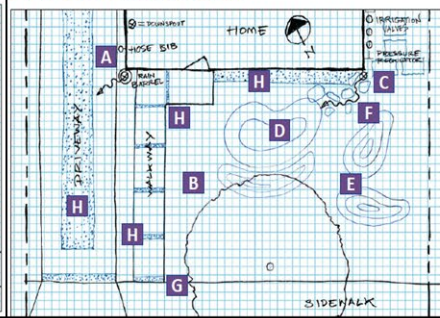
ladwp.com

Curriculum

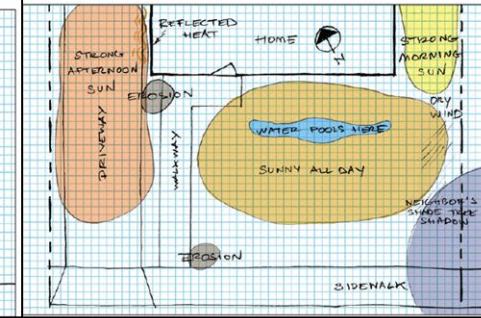
Start with a **Site Plan**



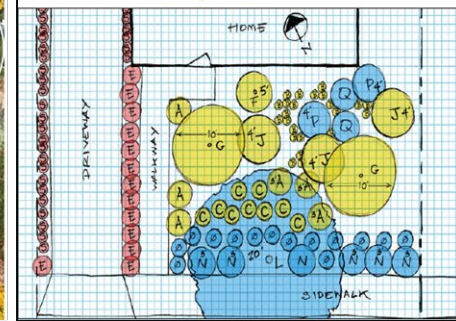
Plan to **Detain the Rain**



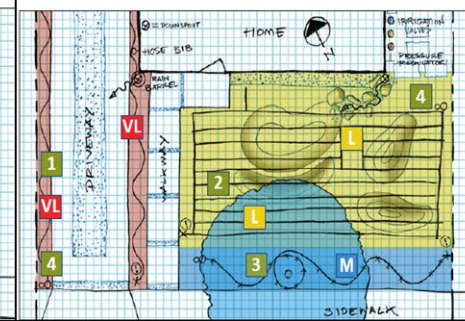
Consider your **Microclimates**



Make your **Planting Plan**



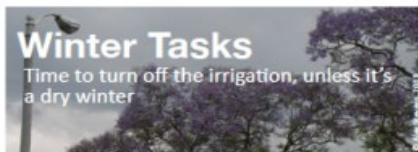
Match Irrigation to new **Hydrozones**



Use this Maintenance Checklist



- ☐ General Landscape Management
 - Review plant health and investigate reasons for observed decline
 - Weed and deadhead flowers as needed
 - Stake trees: add new or make adjustments
- ☐ Maintain Rainwater Capture Systems
 - Make sure gutters and downspouts are not clogged
 - Clean rain barrels/cisterns and clean out catch basins
 - Drill holes in bottoms of catch basins, if standing water
 - Make sure mosquito screens are not ripped or loose
 - Flush pipes
 - Remove debris from swales, especially at inlets/outlets
- ☐ Add Compost or Worm Castings
 - De-compact or aerate areas around trees/large shrubs and add worm castings/compost
- ☐ Replenish Mulch
 - Maintain 3" if established garden, 4" - 6" if still getting established
- ☐ Late Fall Pruning (Chop and Drop)
 - Cut back ornamental grasses (once a year for deciduous, less often for evergreen)
 - Cut back young salvias (sages) by 1/3
 - Cut back perennials and pinch back non-woody shrubs and perennials
- ☐ Irrigation Checkup
 - Turn on each valve to check for problems and make repairs
 - Open manual flush valves and flush
 - Clean irrigation filters
 - Adjust controller - reduce time



- ☐ General Landscape Management
 - Review plant health and investigate reasons for observed decline
 - Weed and deadhead flowers as needed
 - Stake trees: add new or make adjustments

- ☐ Pruning (Chop and Drop)
 - Prune dead, diseased, damaged, and deranged branches of trees and large shrubs
 - Cut back perennials and pinch back non-woody shrubs and perennials
- ☐ Still Time to Plant (but not in wet soil!)
- ☐ Irrigation Checkup
 - Turn on each valve to check for problems and make repairs
 - Manually run irrigation if the weather has been very dry



- ☐ General Landscape Management
 - Review plant health and investigate reasons for observed decline
 - Weed and deadhead flowers as needed
- ☐ Replenish Mulch
 - Maintain 3" if established garden, 4" - 6" if still getting established
- ☐ Irrigation Checkup
 - Turn on each valve to check for problems and make repairs
 - Open flush valves and flush
 - Clean irrigation filters
 - Seasonally adjust automatic irrigation schedule
 - Move drip irrigation and add emitters as the tree grows in order to maintain the wetting zone at the outside edge of the tree's canopy (dripline)



- ☐ General Landscape Management
 - Review plant health and investigate reasons for observed decline
 - Weed and deadhead flowers as needed
- ☐ Irrigation Checkup
 - Turn on each valve to check for problems and make repairs
 - Return irrigation controller to summer program

Host Survey Results



HOST SURVEY RESULTS



100%

100% OF HOSTS REPORTED
HAVING A VERY POSITIVE
EXPERIENCE HOSTING A
HANDS ON WORKSHOP



100% OF HOSTS WERE
SATISFIED OR VERY SATISFIED
WITH THE APPLICATION PROCESS

Application process included completing online form, submitting photos and interviews to determine if location was ideal for workshop

100%

100% OF HOSTS WERE
SATISFIED OR VERY SATISFIED
WITH THE DESIGN PROCESS OF
THEIR LANDSCAPE

And 100% agreed or strongly agreed the designs reflected their preferences provided to landscape designers



"PLANT LIST MADE
SELECTION VERY
EASY."

"THE TEAM WORKED
WITH US ON CREATING A
DESIGN THAT MET OUR
STYLISTIC CHOICES"

Attendee Survey Results



ATTENDEE SURVEY RESULTS



99%

of attendees rated the HOWs as being helpful or very helpful when asked if the information presented at the workshops was helpful to attendees



97% of attendees were satisfied or very satisfied with the HOWs



98.5% of attendees agree their knowledge, understanding and skills for landscape management improved from the HOWs

LADWP WORKSHOPS

On average, **96%** of attendees are likely or very likely to attend a future LADWP workshop and **86%** are very likely to recommend an LADWP event to friends and family



IMPACT

On average, **99%** of attendees said they were likely or very likely to convert to a California Friendly landscape after attending the HOWs.



WHAT ARE SOME BARRIERS PREVENTING YOU FROM TRANSFORMING YOUR OWN LANDSCAPE?



COST



DESIGN



**LACK OF
CONTRACTING
KNOWLEDGE**





IN ADDITION TO THE HOWS, WHAT ADDITIONAL RESOURCES WILL HELP YOU CONVERT YOUR GARDEN?

81%

**FREE DESIGN
SERVICES**

61%

**SUPPLY AND
PLANT LIST**

53%

**LANDSCAPE
MAINTENANCE CLASS**



Participant Rebate Analysis

- 13.6% of attendees applied for a rebate before or after attending a class
- 11 of 20 applications were in compliance with the rebate and eligible for payment; 6 of those apps were paid out after HOW
- 6 of 20 were denied for incomplete applications or ineligibility
- 3 of 20 did not complete the project



Participant Rebate Analysis

Limitations

- Pandemic disruption
- Missed applications in analysis

Further Analysis Needed

- Surveying attendees that did not seek an application to identify what barrier is preventing them
- Identifying improvements to class content to improve success rate of denied applications from attendees

Challenges and Solutions

Challenge 1

- Low recruitment applications for hosts in certain areas
- Recruiting from Council Districts with limited applications
 - Staff attended specific events to outreach
 - Needed to reach customers beyond email and Facebook. Success on Nextdoor with registrations

Challenge 2

- Recruitment Vs. Attendance
- Drop off rate among registrations
 - Increased enrollment to counter drop
 - Reminder emails to customers
 - Door to door flyer distribution day of the event

Next Steps

- Free Landscape Design Program
- Future gardener maintenance classes
- Extension of program
 - Another year with 9 more workshops
 - Vegetable garden designs and best management practices
 - Distribute flyers throughout neighborhoods in advance



Hands on Workshop Video



Questions?

Kristin Tsumura Tsai

Water Conservation Policy

Kristin.Tsumura@ladwp.com

213-367-0122