

# This presentation premiered at WaterSmart Innovations

[watersmartinnovations.com](http://watersmartinnovations.com)





# Water for the Future:

## Educating Children about Home Water Check-Ups

Shavonne Mays  
Senior Water Efficiency Specialist  
Irvine Ranch Water District

Melody Seesangrit  
Water Efficiency Specialist  
Irvine Ranch Water District



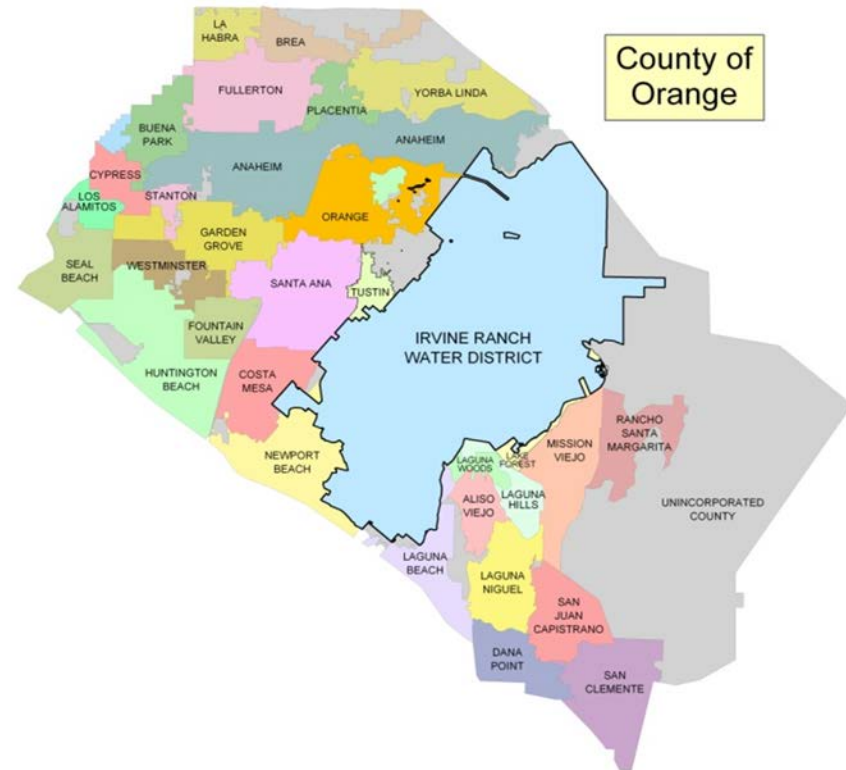
# Irvine Ranch Water District



## **A California Special District Serving Central Orange County**

Reliable High-Quality Water & Sewer Service  
Efficient. Cost Effective. Environmentally Sensitive  
High Level of Customer Satisfaction

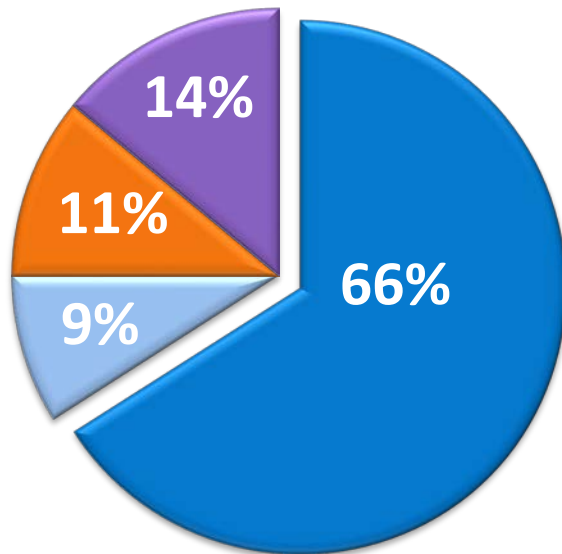
# IRWD Serves 20% of Orange County



# IRWD Water Supply Reliability. Then and Now

## 1990

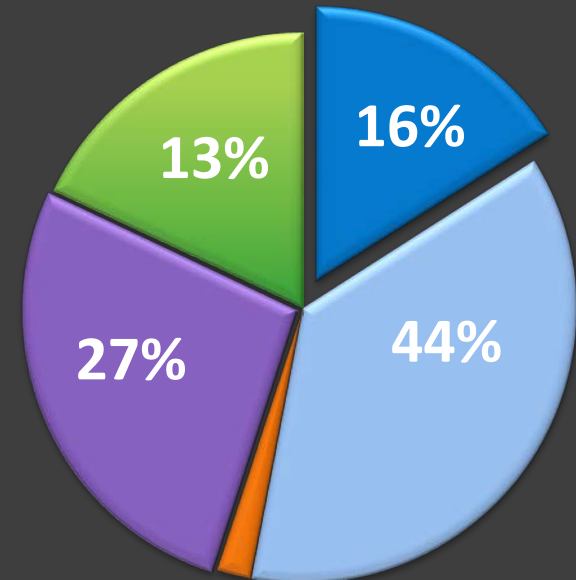
Population Served: **114,000**  
Total Water Provided: **~70,000 AF**



- Imported Water
- Clear Groundwater
- Local Surface Water
- Recycled Water

## 2016

Population Served: **390,000**  
Total Water Provided: **~81,000 AF**



- Imported Water
- Clear Groundwater
- Local Surface Water
- Recycled Water
- Treated Groundwater

# Water Use Efficiency



# Example: IRWD Residential Customer Rates

Tier	% of budget	Rate/CCF
Low Volume Base Rate	0 – 40%	\$ 1.21
	41 – 100%	\$ 1.65
Inefficient	101 – 130%	\$ 4.01
Wasteful	161 + %	\$12.01

100% of water needs for indoor & outdoors

## Monthly Water Use Comparison

Customer Uses Budget - 15 CCF

Customer Over Budget - 30 CCF

Total Water Bill = \$22.11

Total Water Bill = \$162.26

# Water Use Efficiency Program

Allocation Based Conservation Rate Structure

Water Insight Portal

Additional Online Resources and Tools





# Engaging the Community and the Environment



# Education and Community Outreach

- Discovery Science Center
- Student Programs
- Water Awareness Tours
- Water Education and Conservation Programs



# Community Events

- Go Green Environmental Day
- K-7
- Partnerships



# Tree Planting



# Going Beyond Tabling



# Conservation Kit

Learn how to perform your own Home Water Check-Up at the IRWD Online Training Portal at [rightscapenow.com/training-center](https://rightscapenow.com/training-center).

After going through the Training Portal you will be entered for a chance to win a Target gift card worth \$50.



In your Home Water Check-Up Kit are:

- Flow Bag
- Instant-Off Faucet Aerator
- 1.0 GPM Faucet Aerator
- 2 Toilet Dye Tablets

The flow bag is used to determine the flow rate of your current bathroom faucet aerators. Check the flow rate of your current faucet aerators by following the instructions on the flow bag. If the flow of the faucet is greater than 1.0 gallons per minute (GPM), you can replace it with one of the faucet aerators in the Home Water Check-Up Kit.

To test your toilets for leaks, remove the toilet tank cover carefully and drop a toilet dye tablet in the tank. Do not flush the toilet. After 10 minutes, see if color appears in the bowl. If blue color appears in the bowl this indicates that you have a leak.

The How-To video on our website can walk you through a step-by-step process of using the toilet dye tablets and how to fix your toilet leak. Watch the "How to Fix a Toilet Leak in 90 Seconds" video at [https://www.youtube.com/watch?v=tc4rj3R\\_zps](https://www.youtube.com/watch?v=tc4rj3R_zps).

**Congratulations! You just performed a Home Water Check-Up!**

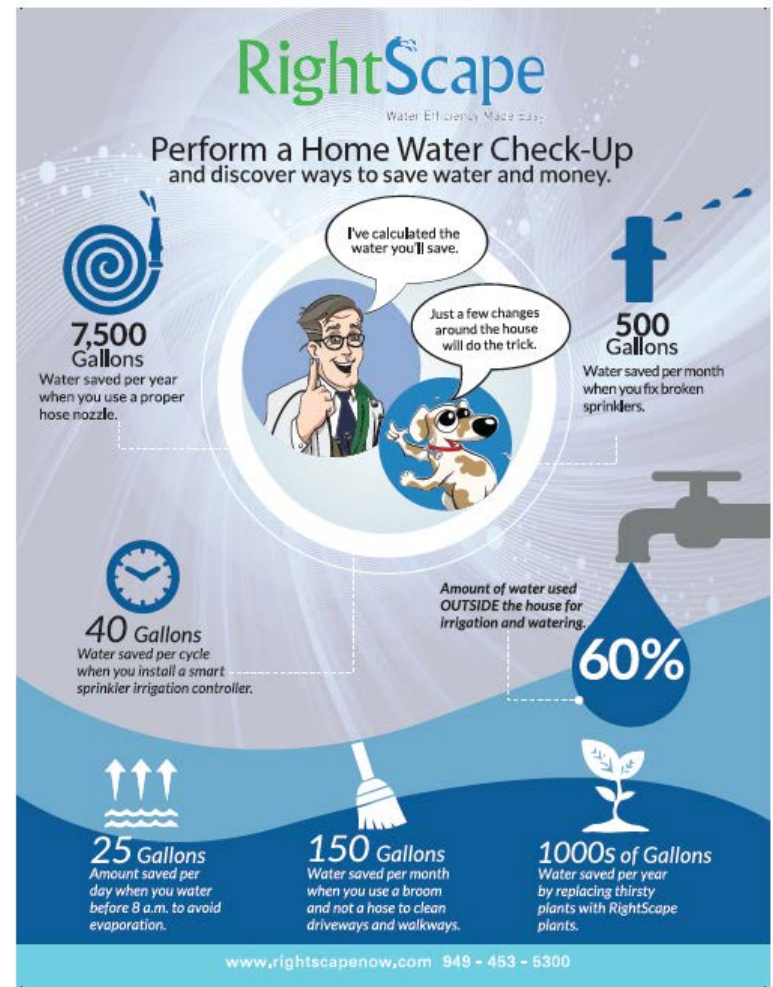
Now that your home is water-efficient, sign up at <https://irwd.waterinsight.com> to view and track your water usage and explore how you are doing compared to similar homes.

Email pictures of yourself performing your Home Water Check-Up and using each of the kit's items to [rightscape@irwd.com](mailto:rightscape@irwd.com) for a chance to win a Target gift card worth \$50. Include your name and grade level in your email.

- Flow bag
- Instant-Off faucet aerator
- 1.0 faucet aerator
- 2 Toilet dye tablets
- Track and compare water use
- Water Savings

# Home Water Check-Up

- Fun and easy
- Educates children and their parents
- Utilizing IRWD's online resources



# Findings

## Results

- Expectations
- Data Collection

seventh fourth fifth  
first kindergarten  
sixth eighth second  
third

## Next Steps

- Grade level appropriate
- Align with lesson plans/curriculum
- Students and Social media





# Plant a Seed and Watch it Grow



# IRWD Contact Information

Shavonne Mays  
Senior Water Efficiency Specialist  
Irvine Ranch Water District  
(949) 453 - 5323  
[mays@irwd.com](mailto:mays@irwd.com)

Melody Seesangrit  
Water Efficiency Specialist  
Irvine Ranch Water District  
(949) 453 - 5530  
[seesangr@irwd.com](mailto:seesangr@irwd.com)

