

# This presentation premiered at WaterSmart Innovations

[watersmartinnovations.com](http://watersmartinnovations.com)





# COMMUNITY PARTNERSHIP: SHIFT FROM DESERTSCAPE TO RAIN HOLDING GARDEN

Rosanna Lau, Los Angeles Department of Water & Power

Marianne Simon, G3, Green Gardens Group



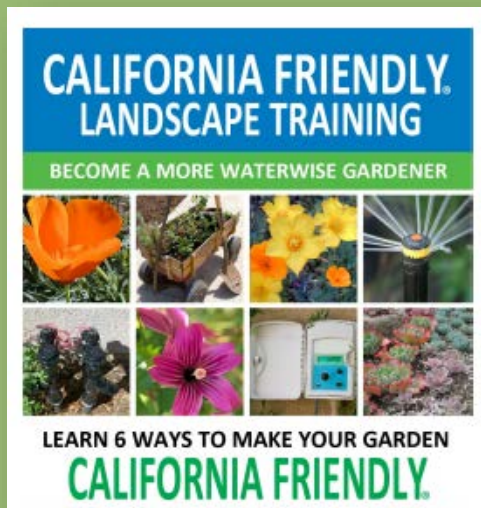
# MIND THE GAP

## A LOOK BACK IN TIME-TURF REMOVAL

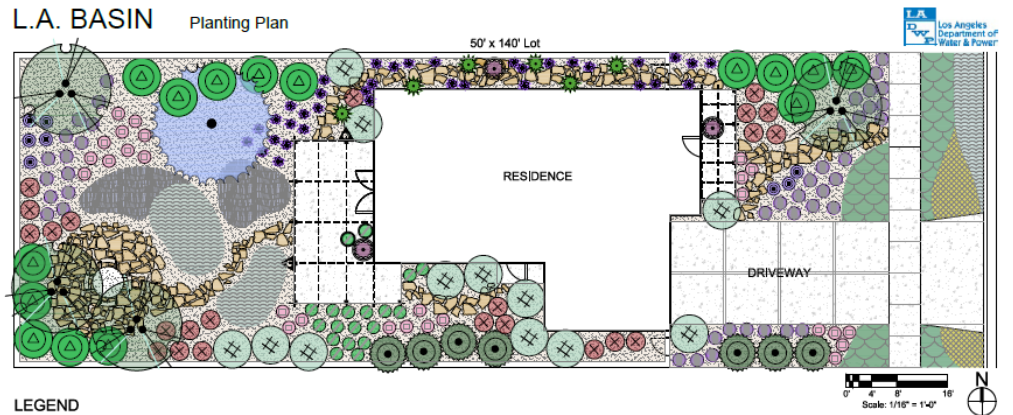
- Limited Resources Available
- Lacked proper knowledge on:
  - Turf removal
  - Climate appropriate plants
  - Landscape Design



**Rebate on Turf  
Removal.**



# REDUCING THE GAP COMMUNITY PARTNERSHIP GRANTS



- LEGEND**
- TREES**
- BOTANICAL NAME: JACARANDA MIMOSIFOLIA
  - BOTANICAL NAME: CLEA WILSONII 'FRUITLESS' (MULTI-TRUNK)
  - BOTANICAL NAME: ROSA BANKSIAE 'LUTEA'
- VINE**
- BOTANICAL NAME: ROSA BANKSIAE 'LUTEA'
- GROUNDCOVERS**
- BOTANICAL NAME: ACHILLEA MILLEFOLIUM 'CALISTOGA'
  - BOTANICAL NAME: DYMONDIA MARGARETAE
  - BOTANICAL NAME: CHAMAEMELUM NOBILE
  - BOTANICAL NAME: DUCHESNEA INDICA
  - BOTANICAL NAME: MULCH
- PERMEABLE PAVING**
- BOTANICAL NAME: SAND-SET FLAGSTONE

GARDENS PLANTS MY LIST WATERING GUIDE RESOURCES

	SIZE	SPACING
CHSIA	1 GAL	72" O.C.
OSEMARY	1 GAL	72" O.C.
	1 GAL	72" O.C.
LAX	1 GAL	36" O.C.
IBENA	1 GAL	60" O.C.
URF	1 GAL	24" O.C.
A DAISY	1 GAL	24" O.C.
RD FERN	1 GAL	36" O.C.
	1 GAL	18" O.C.
BURNUM	1 GAL	
ESBILL	1 GAL	24" O.C.

**Sustainable Gardening Tips:**

**Soils and Compost:**  
Incorporate compost 5" into your soil to retain water / reduce compaction, feed earthworms, and provide valuable nutrients to your plants.

**Integrated Pest Management:**  
Drip and other smart irrigation delivers water directly to roots, allowing no excess water for weeds.



# EXPANDING RESOURCES

- In 2015, resources were expanded :
  - 2-day Hands on Workshops (HOWs)
  - Landscape Professional Training & Certification
  - Design Landscape Training
  - Irrigation System & Controller Training



# TURF REBATE UPDATE: MOVING TOWARD SUSTAINABLE LANDSCAPING

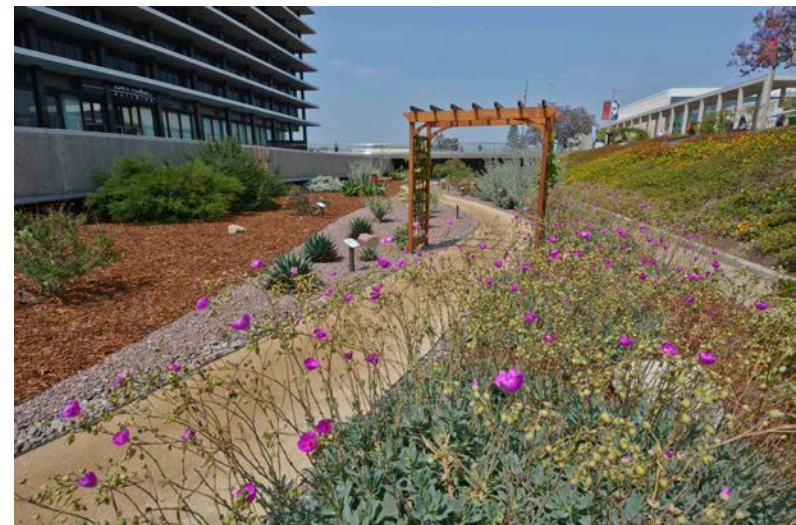
## Incorporating Watershed Approach

- Capture rainfall
- At least 50% native or California Friendly plants
- Synthetic mulch not allowed
- Rock, gravel, and/or Decomposed Granite (DG) limited to 25%
- No rebate on synthetic turf



# CLOSING THE GAP

- Los Angeles Outdoor Landscaping Academy (LAOLA)
  - Gardeners Classes
  - Hands on Workshops
  - Design Landscape Training
  - Landscape Maintenance & Management
- One-on-One Landscape Design Services
- Transforming City Facilities to CFL





# COMMUNITY PARTNERSHIP GRANT 2015





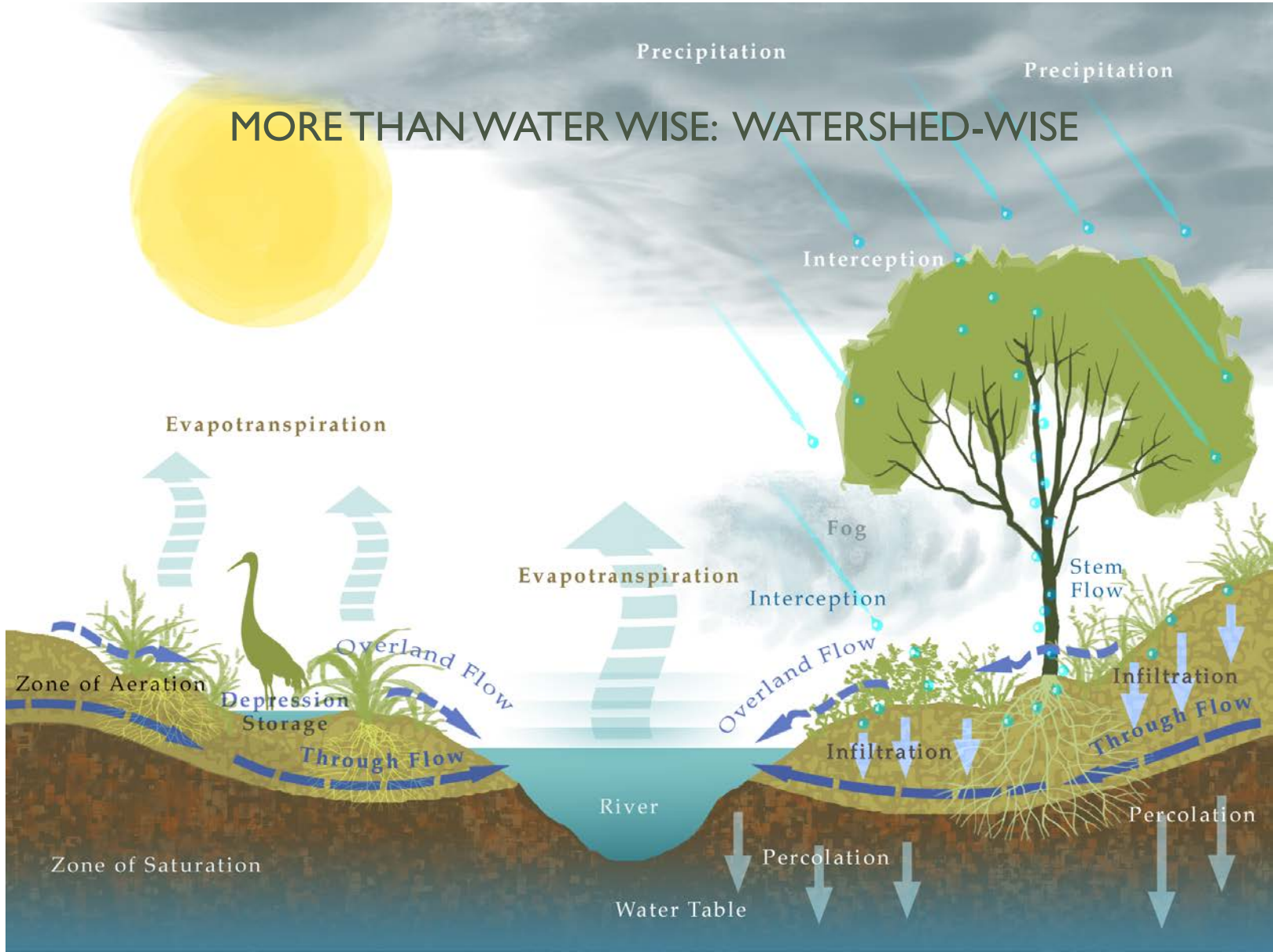
# COMMUNITY PARTNERSHIP GRANT 2015

- 15 Hands On Workshops
  - Turf Removal
  - Rainwater Capture
  - Sheet Mulching
  - Rain Barrels
- Garden Consultations
- 25 Youth Trained



# WATERSHED APPROACH

MORE THAN WATER WISE: WATERSHED-WISE



# LESSONS LEARNED?

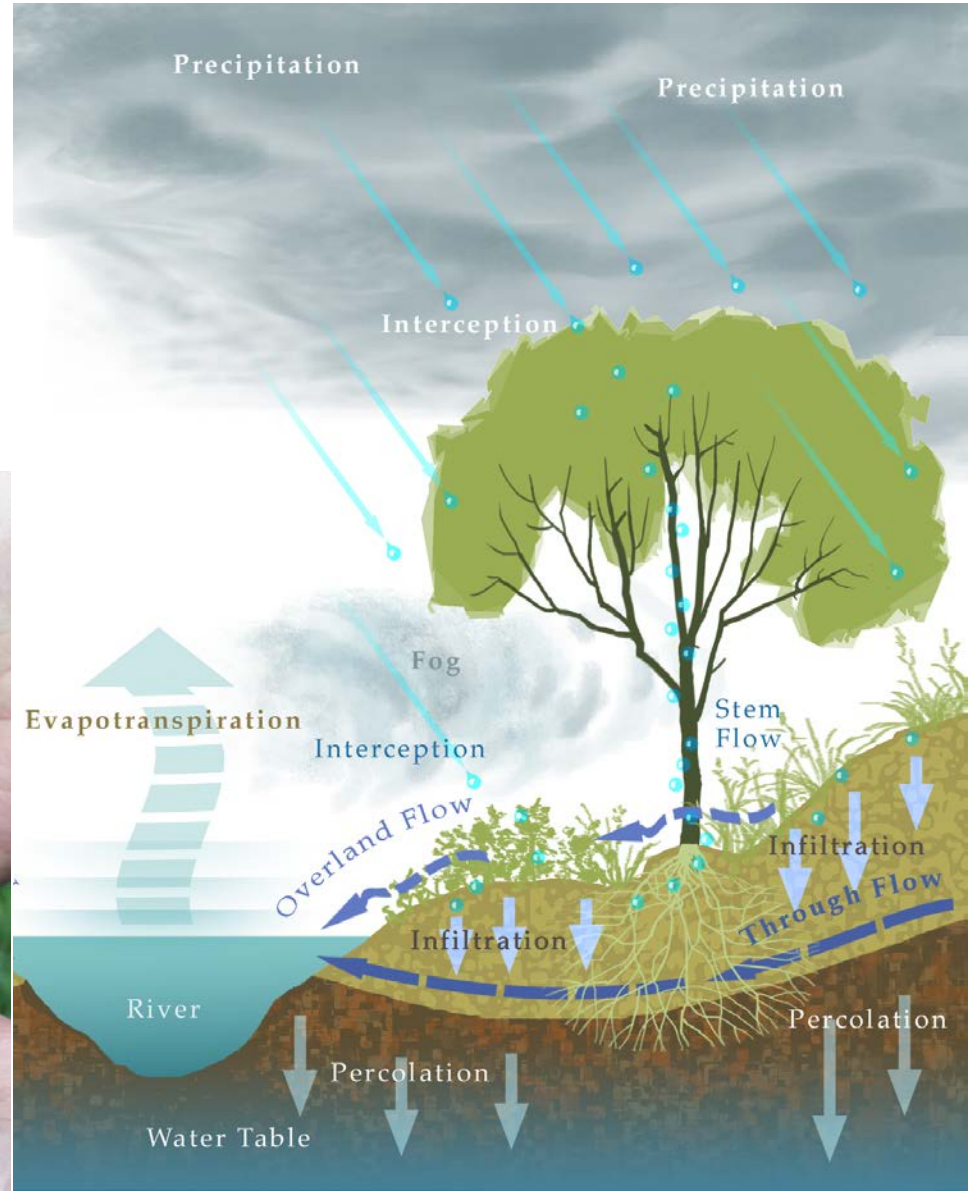
- Obstacles
  - Funds
  - Design help
  - Resources/labor
  - Not really DIY
  - Professionals, please



# BROWN IS NOT THE 'NEW GREEN'



# BEYOND WATER CONSERVATION





# COMMUNITY PARTNERSHIP GRANT 2016



# COMMUNITY PARTNERSHIP GRANT 2016

- Professional Training
- Homeowner Training
  - Watershed Basics
  - Design Seminar
- Maintenance Training
- Watershed Wise Landscapes Installed



# GARDENS THAT 'MAKE' WATER





# MULTI-PRONGED EFFORTS

LA  
DWP  
Los Angeles Department of Water & Power

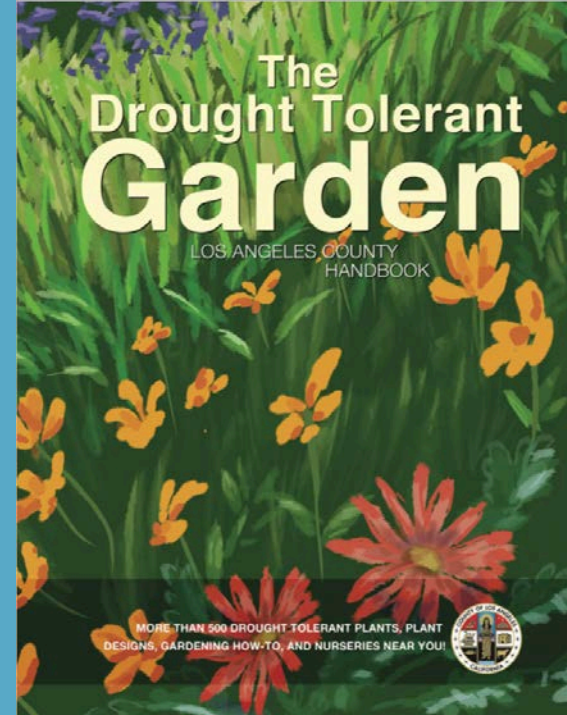
SELVA INTERNATIONAL

G<sup>3</sup> green gardens group  
www.greengardensgroup.com

SURFRIDER FOUNDATION

OCEAN FRIENDLY GARDENS

H/LABT  
Hollywood / Los Angeles Beautification Team

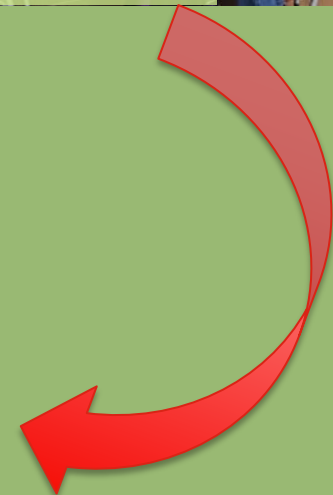
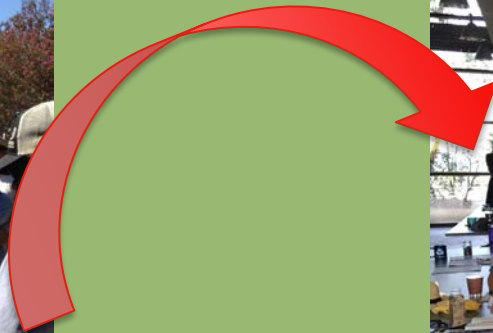
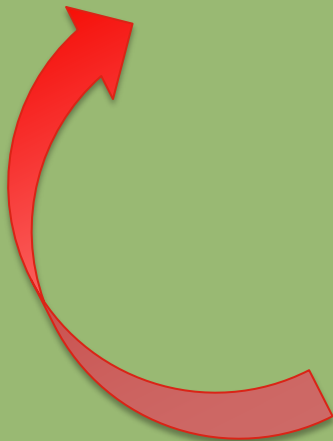


Los Angeles LA Department of Water & Power

CASH IN YOUR LAWN

\$1.75 per sq. ft.

# INTEGRATED APPROACH





**Worth It?**



**Worth It!**













# QUESTIONS?

Marianne Simon

G3, Green Gardens Group

[www.GreenGardensGroup.com](http://www.GreenGardensGroup.com)

Rosanna Lau, Water Conservation

Los Angeles Department of Water and Power

[www.LADWP.com](http://www.LADWP.com)

