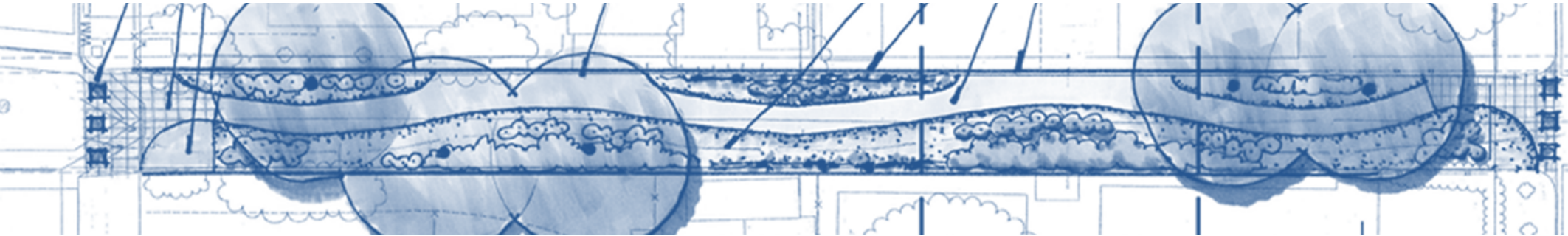


This presentation premiered at WaterSmart Innovations

watersmartinnovations.com



Building the Teams That Build Green Infrastructure



2013 WaterSmart Innovations
2 October 2013



**Council for
Watershed Health**

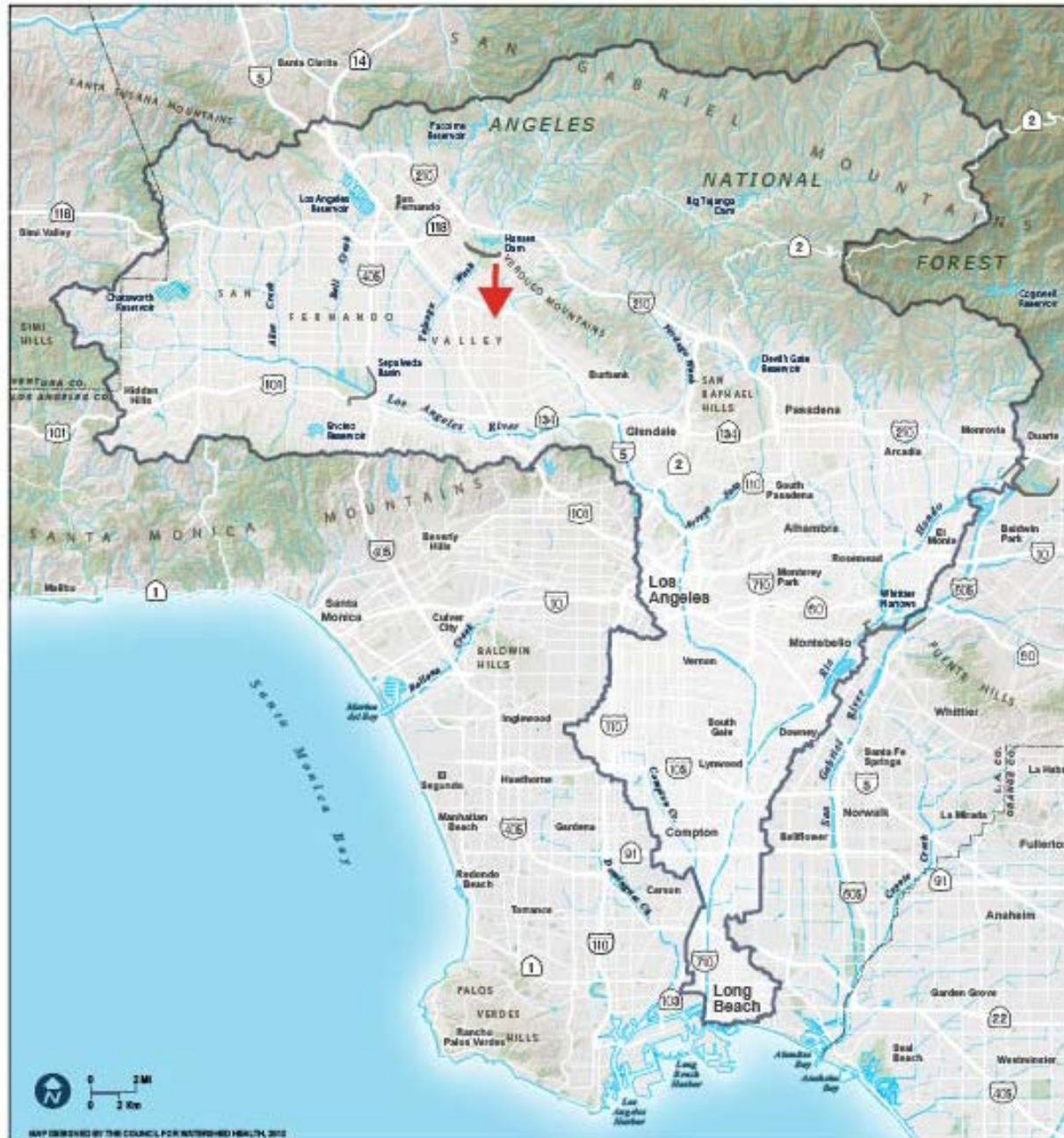
Eileen Alduenda
Project Manager :: Researcher



The region's hub for watershed research and analysis

- Working at the intersection of research and policy
- Driving applied research to improve policy and practice
- Connecting diverse perspectives to address timely issues

Los Angeles River Watershed



Sun Valley Watershed



Elmer Avenue Neighborhood Retrofit Project



40 acres drain to Elmer Avenue



20 acres drain to Elmer Paseo



0 135 270 540 Feet

Elmer Avenue Project Partners



MWD
METROPOLITAN WATER DISTRICT OF SOUTHERN CALIFORNIA



City of
Santa Monica



TREEPEOPLE



Elmer Avenue Neighborhood: Before & After



Elmer Paseo



Project Funders



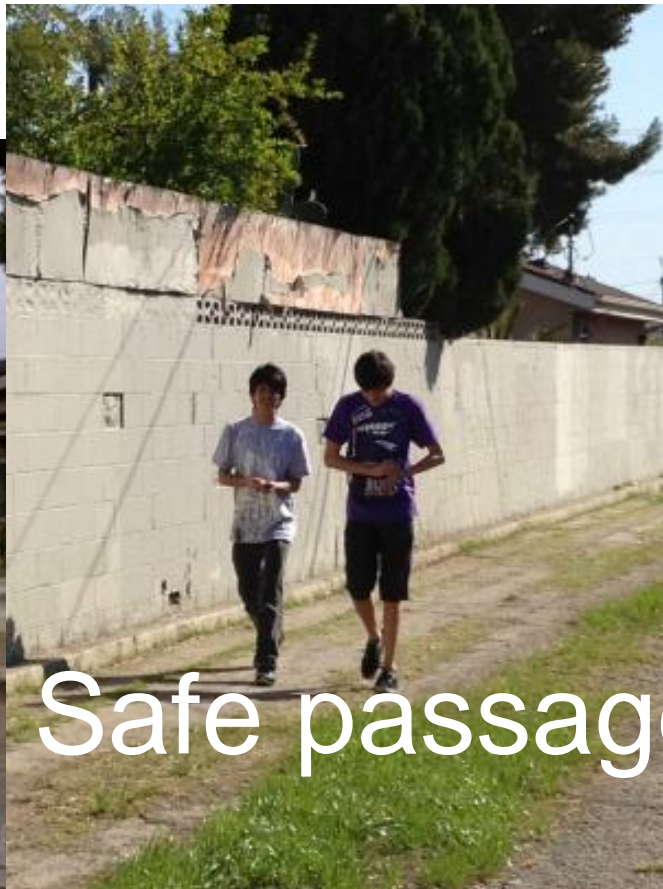
Santa Monica Mountains Conservancy



Elmer Paseo Stormwater Improvement Project Goals



Infiltrate 4 acre feet



Safe passage



Habitat

Project Team

Residents





Project Roles:

- Brought together Project Partners & Funding
- Managed project design, construction, establishment
- Communicated with residents
- Participated in Design and Engineering Phase
- Facilitated communication among City departments



Project Roles:

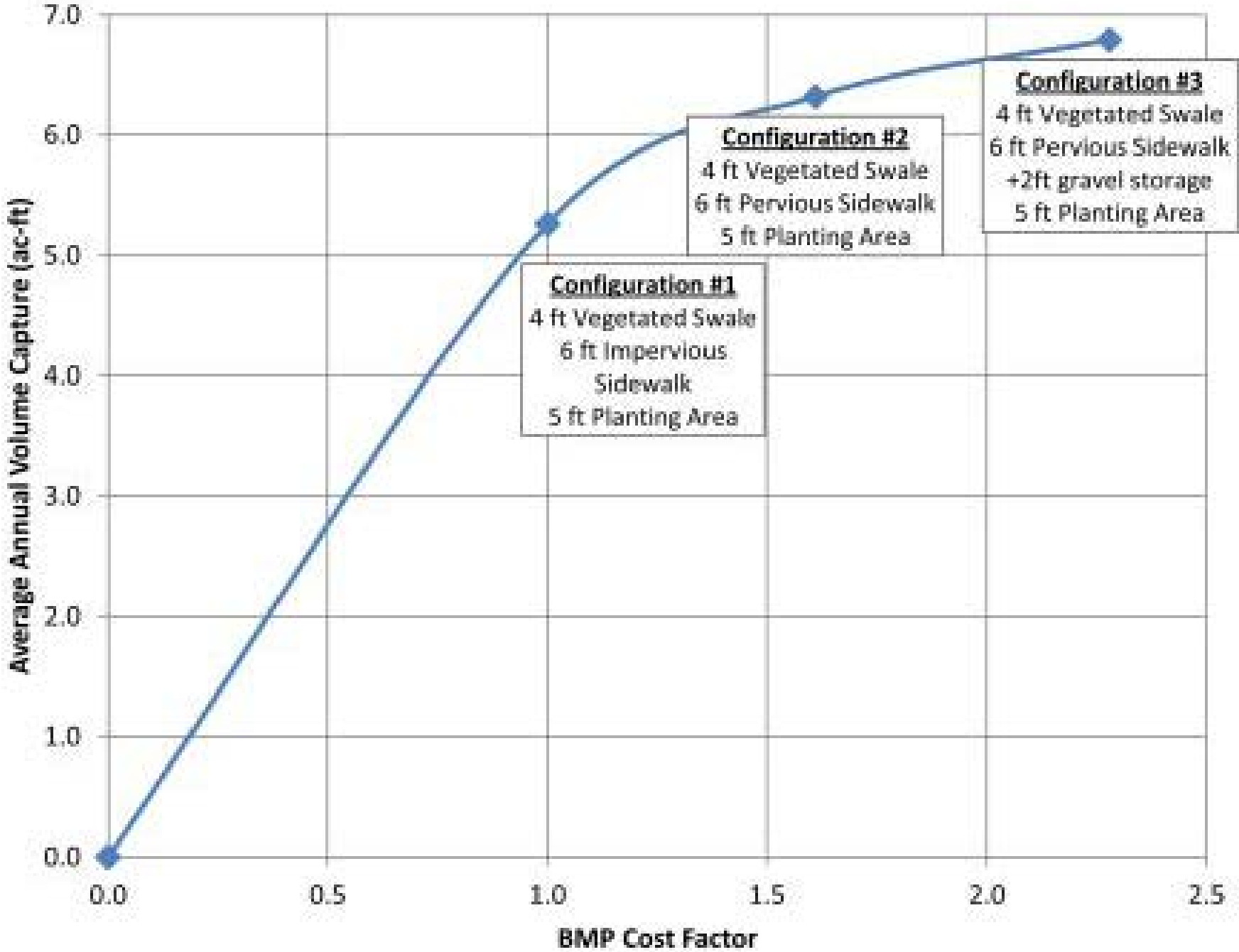
- Landowner
- Project Partner
- Provided project funding via Proposition O
- Participated in interviews for design and engineering consultant
- Participated in Design and Engineering Phase
- Facilitated communication among City departments



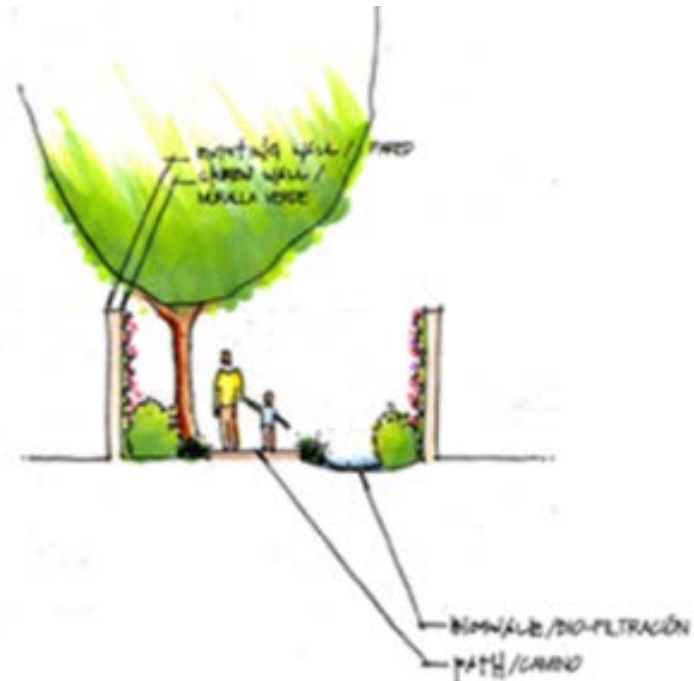
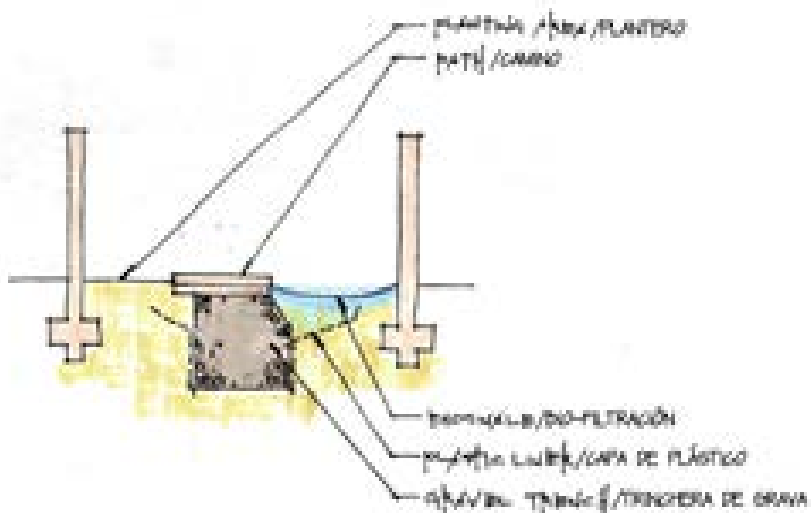
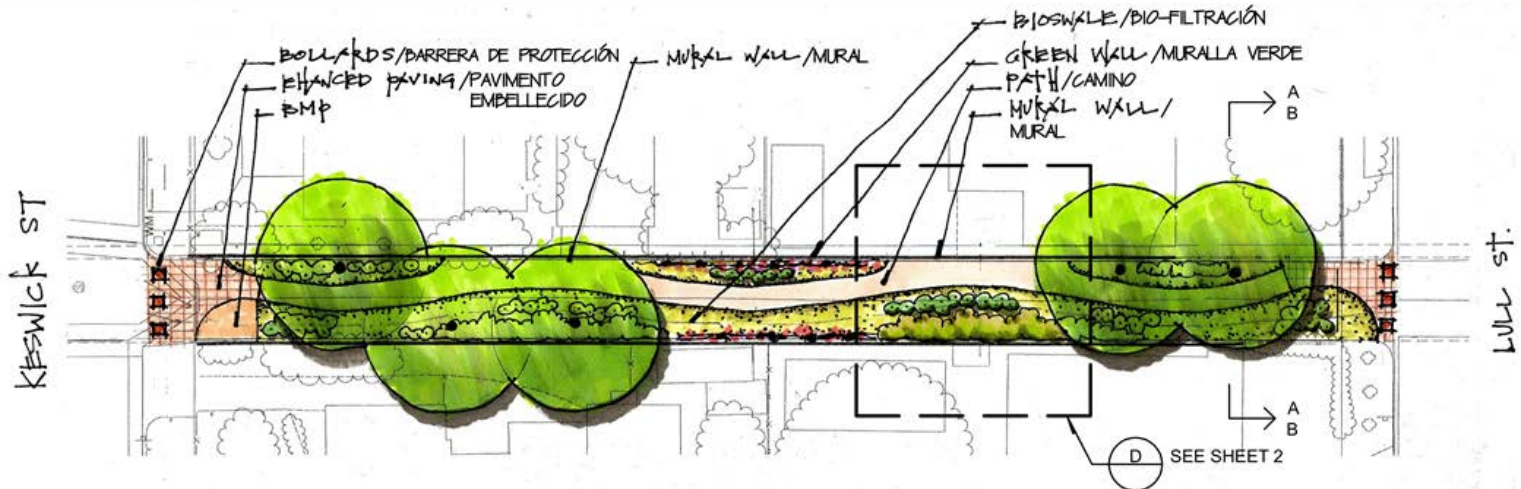
Project Roles:

- Engineer & Landscape Architect
- Construction Management & Technical Consultant

Optimized Configuration Options



Updated Concept Design



Resident Participation





Project Roles:

- Construction Contractor
- Project Establishment Contractor

Construction Activities



Demolition and removal of asphalt pavement



Construction Activities



Excavation of infiltration trench

Construction Activities



Installation of infiltration trench gravel

Construction Activities



Construction of bio-swale, infiltration trench, and pathway continued.

Construction Activities



Survey for pathway elevation points



Base layer for pervious concrete pathway

Construction Activities



Construction of pervious concrete pathway.

Construction Activities



Concrete for green screen footings.

Construction Activities



Fine grading for bio-swale



Elevation points set for bio-swale

Construction Activities



Letting the site dry out after rain.



Construction Activities



River rock cobble for bio-swale forebay.

Construction Activities



Delivery of California native plants.



Before & After: North Entry



October 2012



January 2013

North Entry



January 2013

Before & After: South Entry

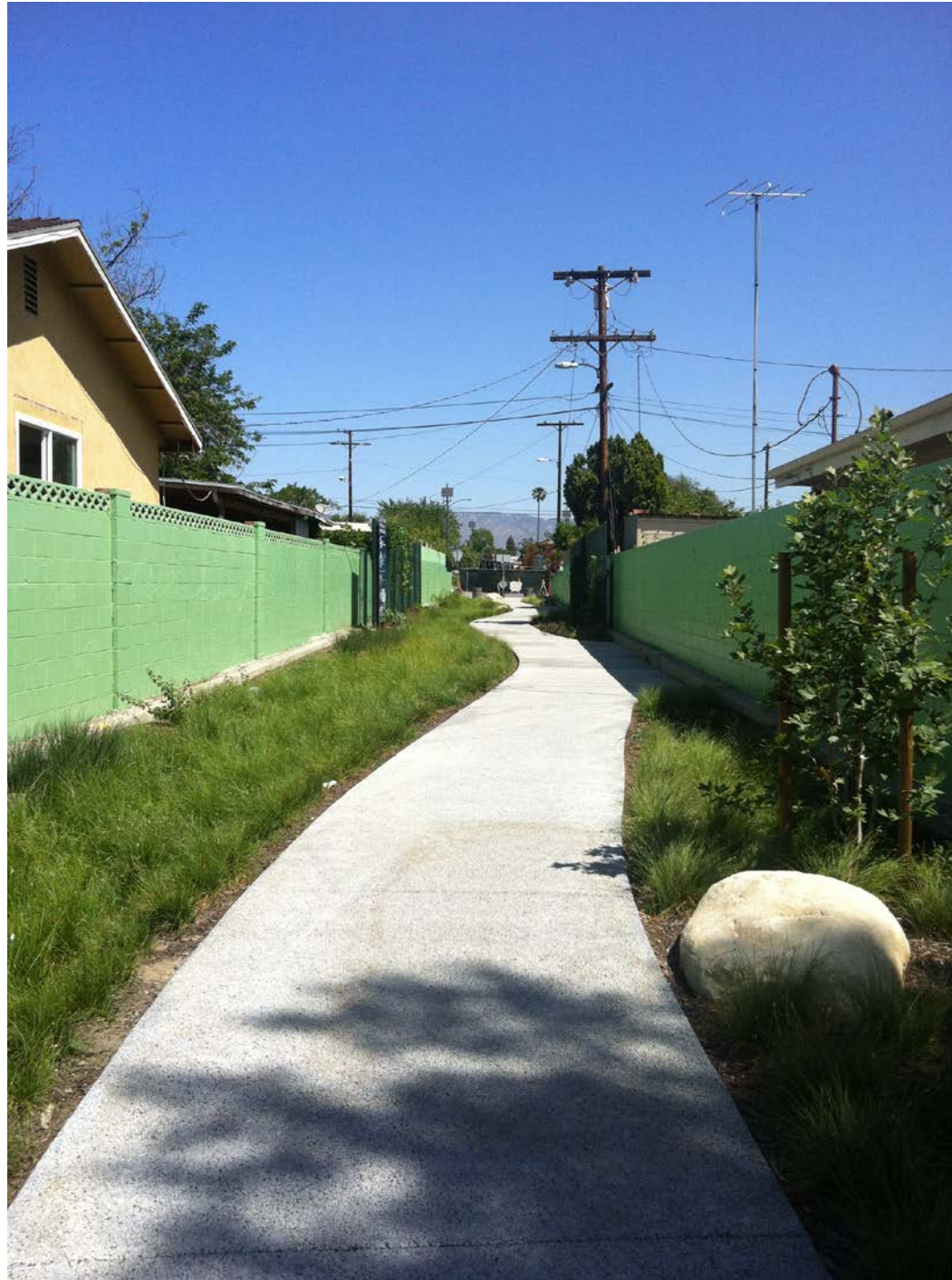


October 2012



February 2013





May 2013

Project Partners



Santa Monica Mountains Conservancy



Residents of Elmer Avenue, Keswick St. Lull St.





June 2013

Questions



www.watershedhealth.org

Eileen Alduenda – Researcher/Project Manager - eileen@watershedhealth.org - 213-229-9945