

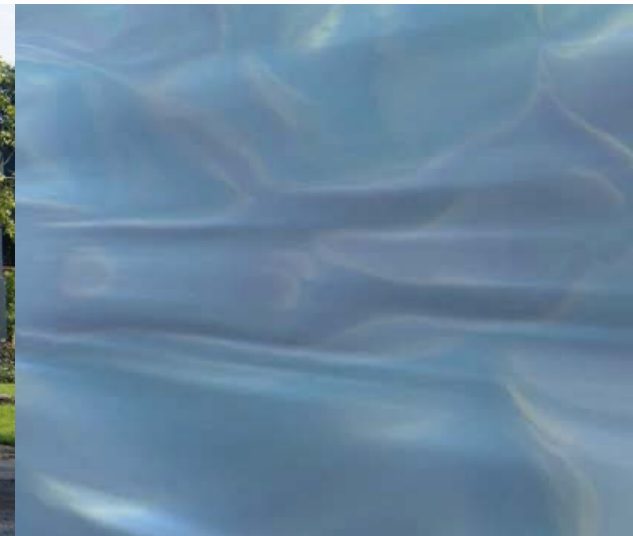
This presentation premiered at WaterSmart Innovations

watersmartinnovations.com



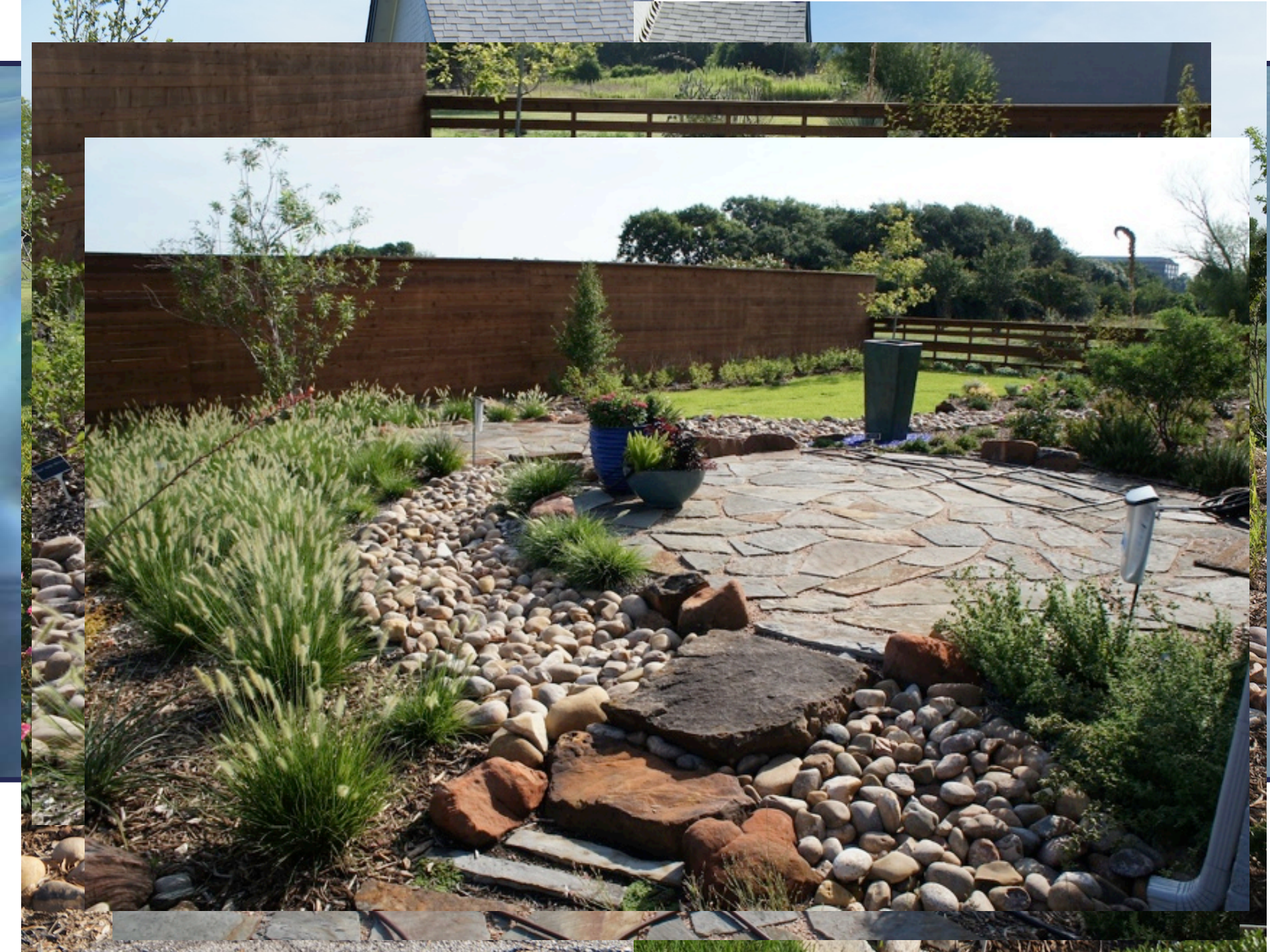


The Retro-Fit WaterSense Labeled Home Classroom



First WaterSense Labeled Home in Dallas Fort Worth

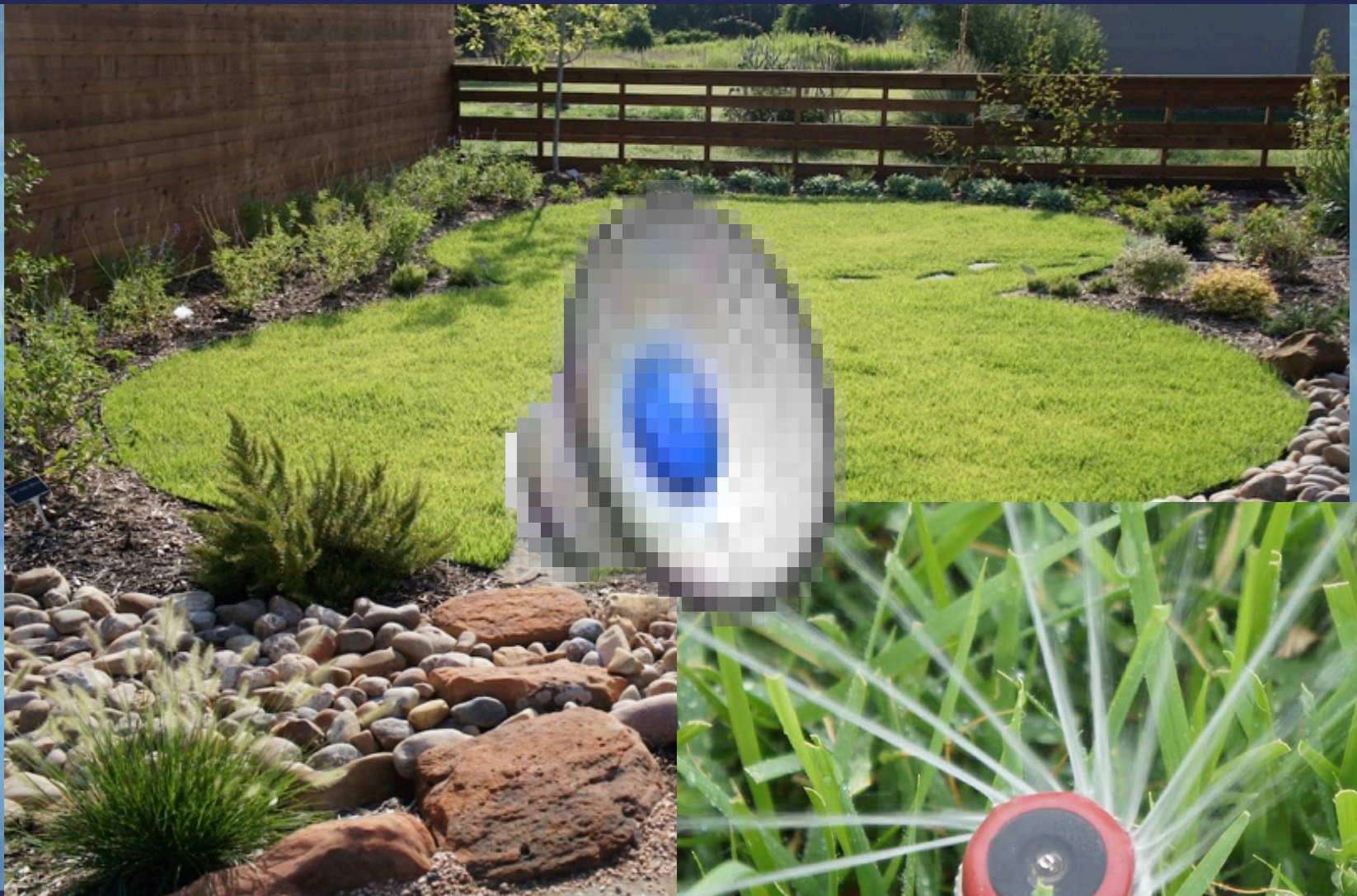




- **30% Turf**
- **40% Planted Beds**
- **30% Hardscape**
- **All Native and Adaptive Plant Material**

- **Multi-Stream Rotors**
- **Inline Drip Irrigation**
- **ET Controller with Rain/Freeze Sensor**

Landscape and Irrigation



Multi-Stream Rotor
Nozzles In All Turf



In Line Drip Tubing
In All Landscape Beds



Irrigation Supplied
By Rainwater Cistern

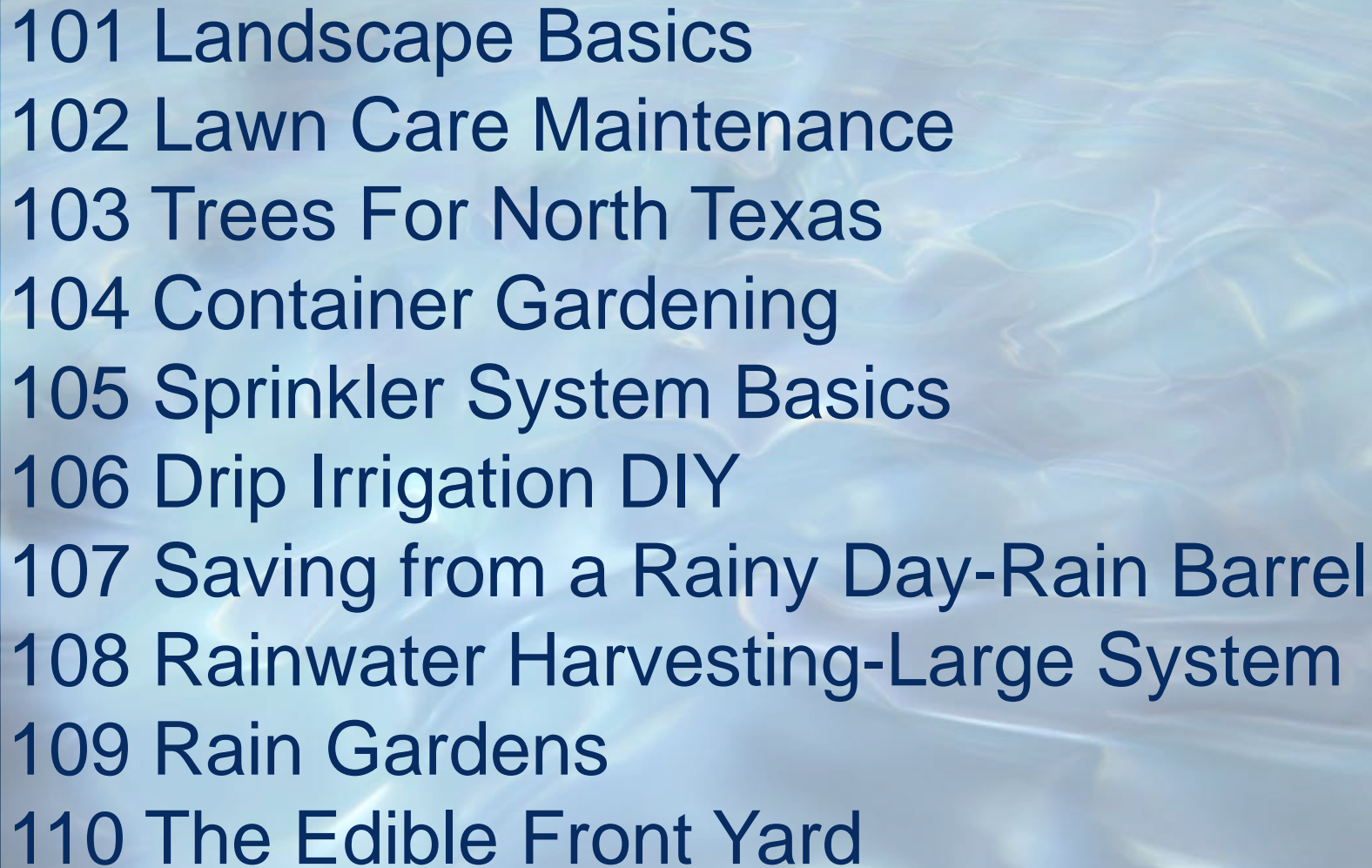


Plant Selection
and Design

-Native & Adaptive Plants
-Pervious Surfaces

- **Traditional North Texas Landscape**
 - Would use 25,000 gal/month
- **WaterSense Labeled Homes**
 - Landscape utilizes 64% less water
 - Irrigation system 90% more efficient
 - 1,000 gallon rainwater harvesting tank should provide all landscape irrigation needs once established
 - Savings of \$800 a year

Water Savings

- 
- The background of the slide is a close-up photograph of water with gentle ripples, creating a textured, blue-toned surface.
- 101 Landscape Basics
 - 102 Lawn Care Maintenance
 - 103 Trees For North Texas
 - 104 Container Gardening
 - 105 Sprinkler System Basics
 - 106 Drip Irrigation DIY
 - 107 Saving from a Rainy Day-Rain Barrel
 - 108 Rainwater Harvesting-Large System
 - 109 Rain Gardens
 - 110 The Edible Front Yard

Water University

- **16 Classes**
- **20 Group Tours**
- **2,600 Visitors**
- **Audiences**
 - **Homeowners**
 - **Professional (irrigators, landscape architects, engineers, horticulturalist, Master Gardeners, Designers, etc.)**

Participants

- **94 % of participants said they would adopt a water efficiency practice**
- **75 % increase in knowledge gain by participants**
- **100% said that the hands on experience increased their understanding or the practices being asked of them to implement**

Effectiveness



Interior Before



Interior After



**Gallons
Saved
per day
20**

Showerheads

**Gallons
Saved
Per day
14**



Bathroom Faucets

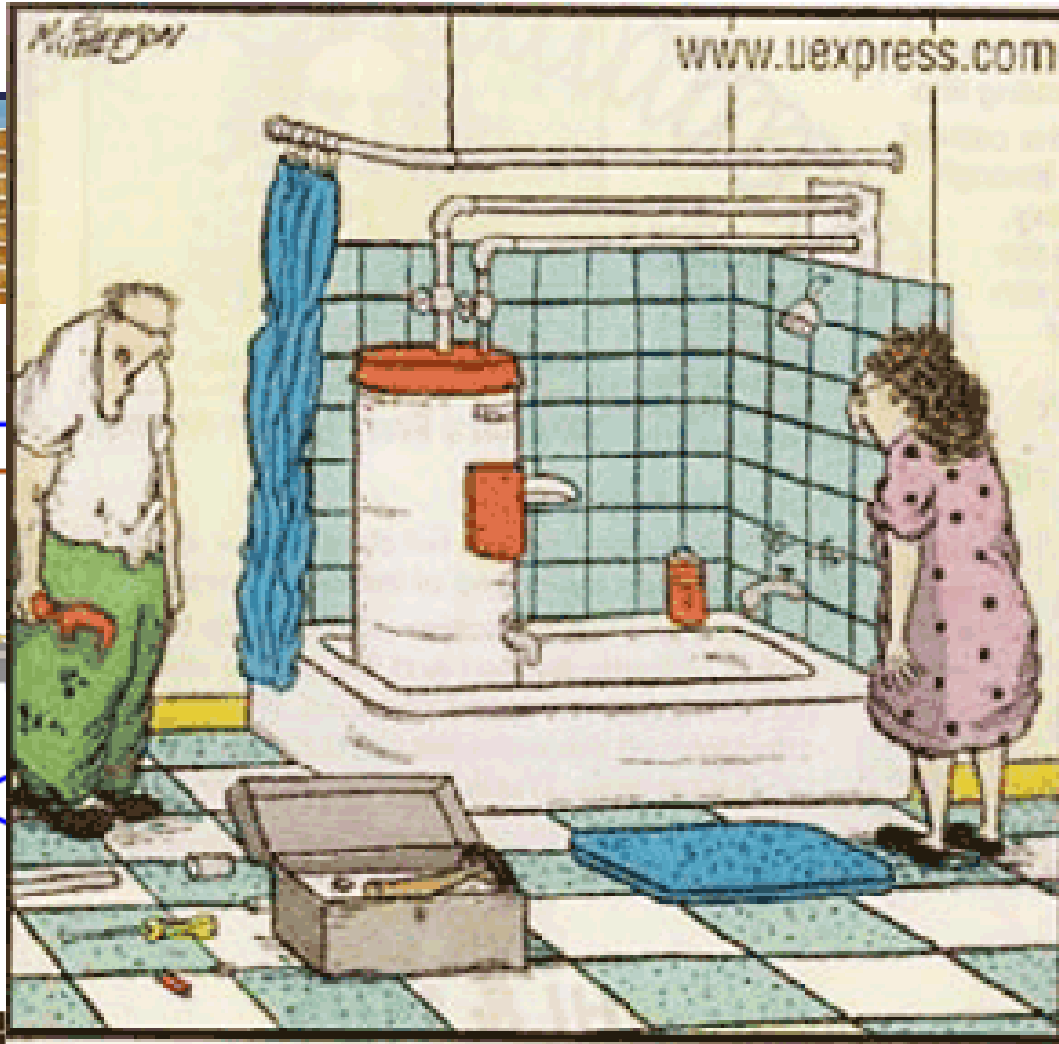
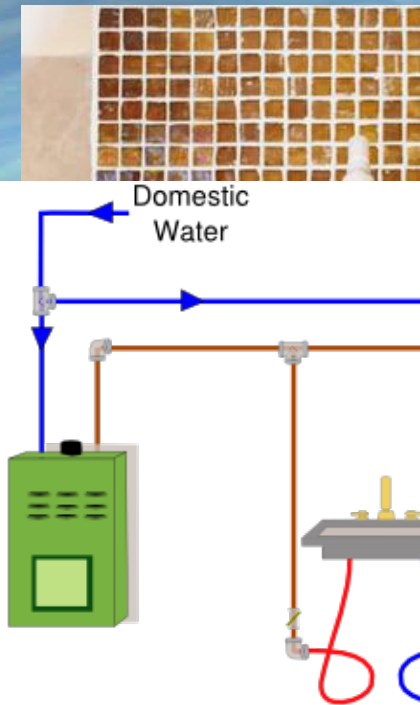


**Gallons
Saved
per day
8**

Dual Flush Toilets

look for





Ballons
Saved
per day
200

On Demand Hot Water System



Partners

Urban Water Team

Clint Wolfe, Dotty Woodson,
Patrick Dickinson, Karen Sanders

Texas A&M AgriLife Research
17360 Coit Road | Dallas, TX 75252
t. 972.952.9671 | f. 972.952.9216
urbanwater@tamu.edu
<http://dallas.tamu.edu>