

This presentation premiered at WaterSmart Innovations

watersmartinnovations.com



A successful education conservation program with no budget, no staff

The Chino Creek Wetlands and Educational Park
Lucia Fuertez Diaz, Inland Empire Utilities Agency, Chino, California



Water Use Efficiency Renewable Energy Resource Management



- Today, a regional wholesale imported water supplier and wastewater treatment provider
- IEUA's service area encompasses 242 square miles in the southwest corner of San Bernardino County and serves a growing population of 850,000 people.
- Member retail agencies include: the cities of Chino, Chino Hills, Ontario and Upland, Cucamonga Valley Water District, the Fontana Water Company, Monte Vista Water District, and San Antonio Water Company

IEUA Mission

... to supply imported and recycled water; collect, treat, and dispose of wastewater; and provide other utility-related (renewable electrical energy, compost) services to the communities it serves. The Agency strives to provide these services in a regionally planned, managed, and cost-effective manner.



Water &
Wastewater
Treatment &
Supply



Recycled
Water Supply
& Distribution



Groundwater
Recharge

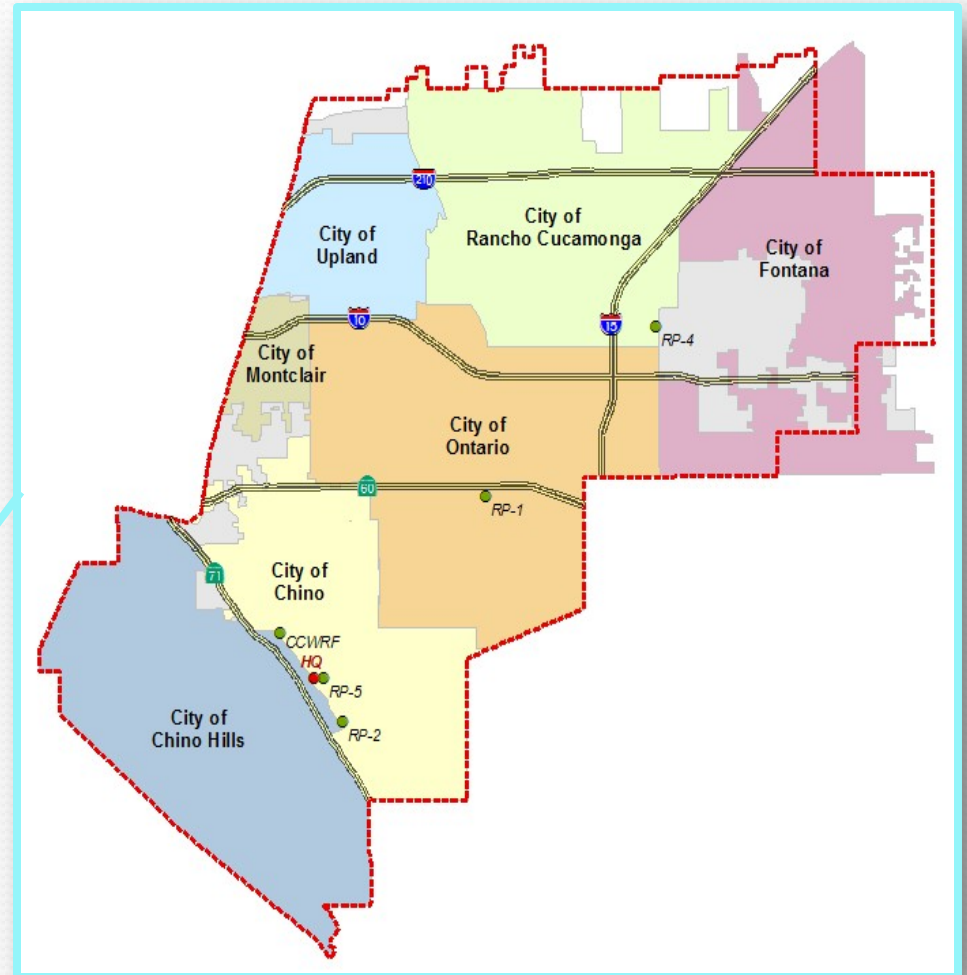
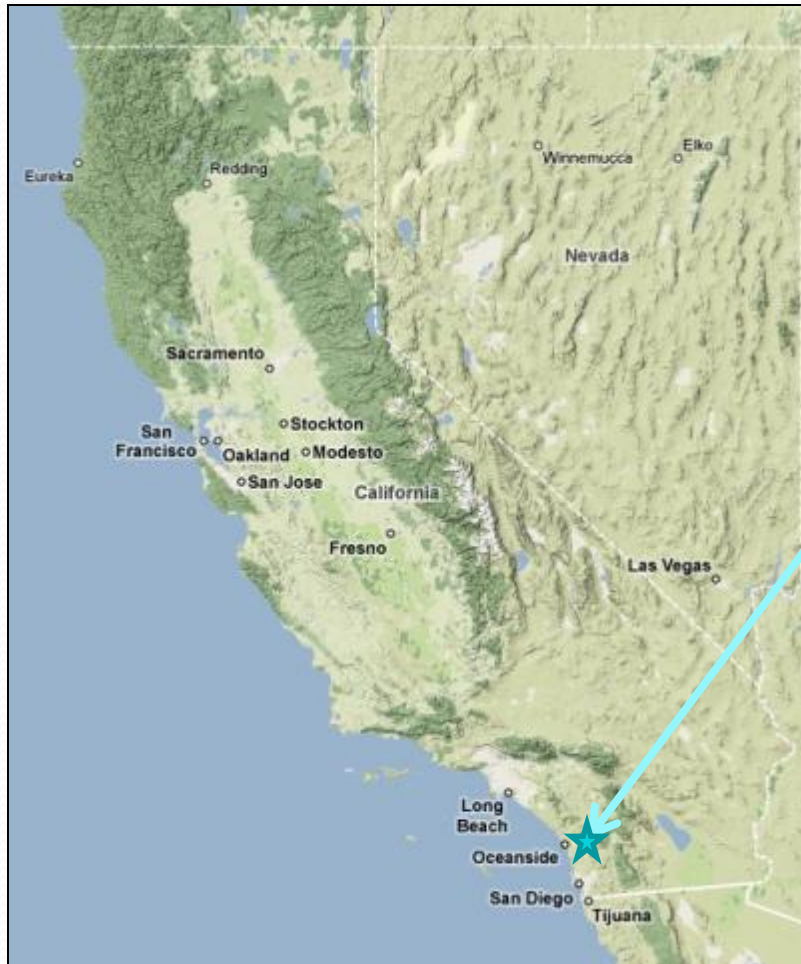


Renewable
Energy
Generation



Compost
Production

Agency and Service Area Overview



The background of the slide features a photograph of a pond. The water is calm and reflects the sky. Tall, green reeds and grasses grow along the edges of the pond. The sky is a clear, bright blue. The overall image has a soft, slightly faded appearance, allowing the text to be clearly visible.

Park Background

- Project received 50% of funding from the California Regional Water Quality Control Board, 2004
- Park is located within the City of Chino in California

Chino Creek Wetlands and Educational Park



Mormon Rocks



Big Bear Lake



San Bernardino

Rialto

Highland

Upland

Rancho Cucamonga

Fontana

Bloomington

Colton

Loma Linda

Pomona

Ontario

Redlands

Lake Perris



Prado Wetlands



Chino Hills

Yorba Linda

Corona

Riverside

Moreno Valley

Anaheim

Orange

Santa Ana

San Jacinto Mountains



Bolsa Chica Reserve



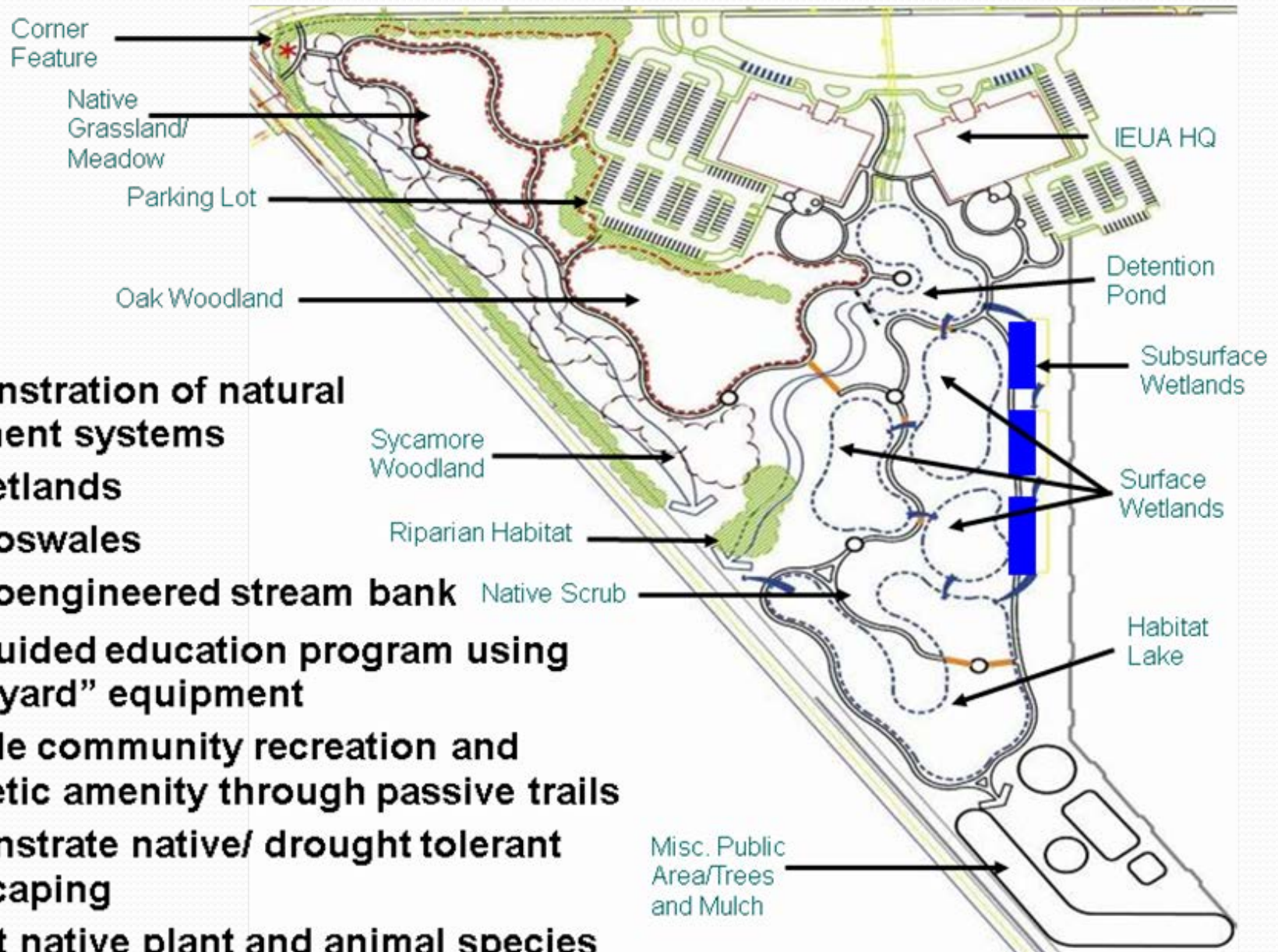
Park Benefits

- Built with the assistance of 1,000 volunteers
- Designed to direct flows through the park and continue into a soft bottom portion of Chino Creek Reach 1, while reducing nitrogen levels in the water.
- Chino Creek flows into the Santa Ana River in the Prado Wetlands.
- Demonstration site; created to view unique features of nature at work throughout the region

Natural Treatment System

- Recycled water introduced through a creek to a detention pond
 - Retention and detention pond provides initial storage and detention for storm flows
 - Recycled water and storm water flow through three paths while reducing nitrogen levels
 - Surface Flow Wetlands
 - Subsurface Flow Wetlands
 - Wetlands Stream

Project Objectives and Key Features



- **Demonstration of natural treatment systems**
 - wetlands
 - bioswales
 - bioengineered stream bank
- **Self-guided education program using “boneyard” equipment**
- **Provide community recreation and aesthetic amenity through passive trails**
- **Demonstrate native/ drought tolerant landscaping**
- **Attract native plant and animal species**

Park Features

- Unique Park Design
 - 22 acres of Environmental recreation
 - Public education
 - Demonstration areas
 - Conservation areas
 - Functional bioremediation wetlands



Chino Creek Wetlands and Educational Park



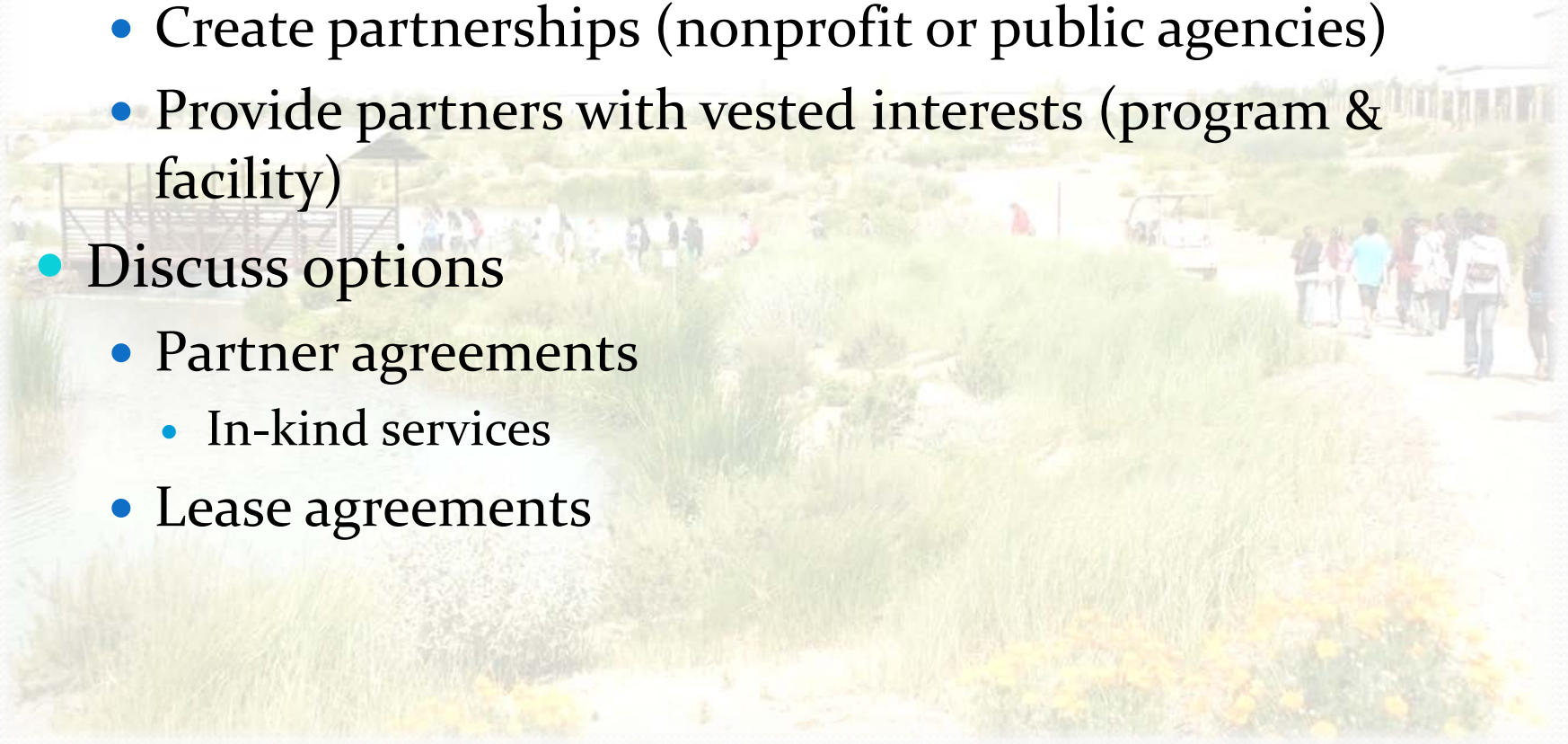
What was needed?

- Park completed in June 2007
 - Education & Conservation Program
 - Biological monitoring
- Required by the State grant



Start Building the Program

- Identify and solicit stakeholders
 - Create partnerships (nonprofit or public agencies)
 - Provide partners with vested interests (program & facility)
- Discuss options
 - Partner agreements
 - In-kind services
 - Lease agreements





Inland Empire Utilities Agency

A MUNICIPAL WATER DISTRICT



**Santa Ana Watershed
Association**



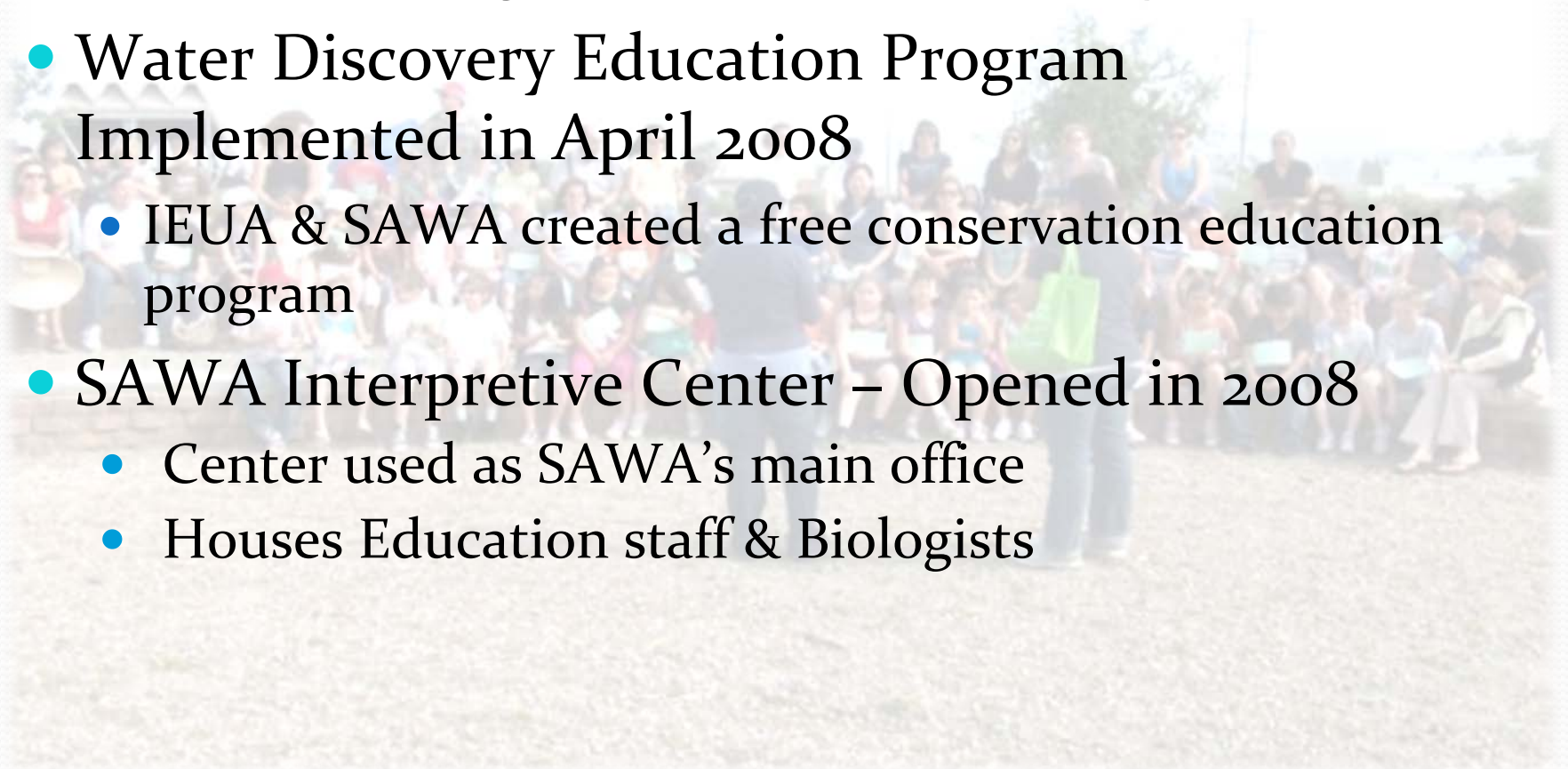
Park's Program



- Santa Ana Watershed Association (SAWA)
 - Created lease agreement for a portion of the park
 - In-kind services as payment plus \$1.00 annually
 - Staffed On-site Interpretative center
 - Responsible in creating and facilitating an education conservation program
 - Provide Wetlands/Park monitoring and wildlife management

Water Discovery Program

- Park Construction completed in June 2007
 - Education Program required within one year
- Water Discovery Education Program Implemented in April 2008
 - IEUA & SAWA created a free conservation education program
- SAWA Interpretive Center – Opened in 2008
 - Center used as SAWA's main office
 - Houses Education staff & Biologists





Program Funding

- By 2010 a total of 1,636 students had been through the program
- Funding needed for FY 2010-2011
 - To revamp the education program
 - Add more staff, activities, and materials
- IEUA received grant funding from California State Department of Parks and Recreation, 2010



Program Funding

State of California Department of Parks and Recreation Funding



- California Wildlife Protection Act 1990
 - Habitat Conservation Fund Project
 - Water Discovery Field Trip Program and Mini Bussing Grant Program
 - Received April 15, 2010
 - Total Grant funding \$207,900 over 5 years

Program Funding

- Contract with SAWA for Water Discovery Program match-share
- Grant pay's 50% of all costs
- The other 50% from lease agreement (in-kind services)
- With grant funding a total of **4,100** students have participated in the program since 2008.





Park Maintenance

- Budget cuts
- Reduced workforce
- Needed assistance with the 22 acre park
- What next?



A Volunteer Program

- Allows community members to volunteer their efforts in park maintenance
 - Implemented program in 2009, total of 500 community members have participated
 - Partnered with HandsOn Inland Empire (United Way)
 - Private industry interest
 - Special team building requests
 - Activities
 - Invasive plant removal
 - Installation of plants
 - Demonstration garden maintenance
 - Various clean up events



Garden In Every School®

- Demonstration Garden
- SAWA & IEUA increased community involvement and environmental awareness at the park.
 - Demonstration Garden
 - Installed to inspire youth to take action in the community
 - Designed and Installed by youth volunteers from the community



Other Partnerships

- The park has provided Promotional Opportunities, Integration of Programs and Multi-beneficial site uses for the Agency and other entities



Proven Success

- Built stakeholders interest and built community, private and public partnering
- Established Volunteer programing
- Utilization of state funding for sustainability
- In-kind support
- For more information:
 - Check out the Agency's blogs!!
 - <http://ieuawatereducation.blogspot.com/>
 - <http://chinocreekwetlandsandeducationalpark.blogspot.com/>



Questions?

Inland Empire Utilities Agency,
Lucia Fuertez Diaz
Email: ldiaz@ieua.org
Office line: (909) 993-1631
Agency Website: www.ieua.org

