

This presentation premiered at WaterSmart Innovations

watersmartinnovations.com



What Have You Done For Me Lately?

(Providing quality programs for the schools within your service area)

Tiffany Tran
San Gabriel Valley Water Company



Darleen Phares
Suburban Water Systems



**Suburban
Water Systems**

A SouthWest Water Company



Tammie Myers
Park Water Company

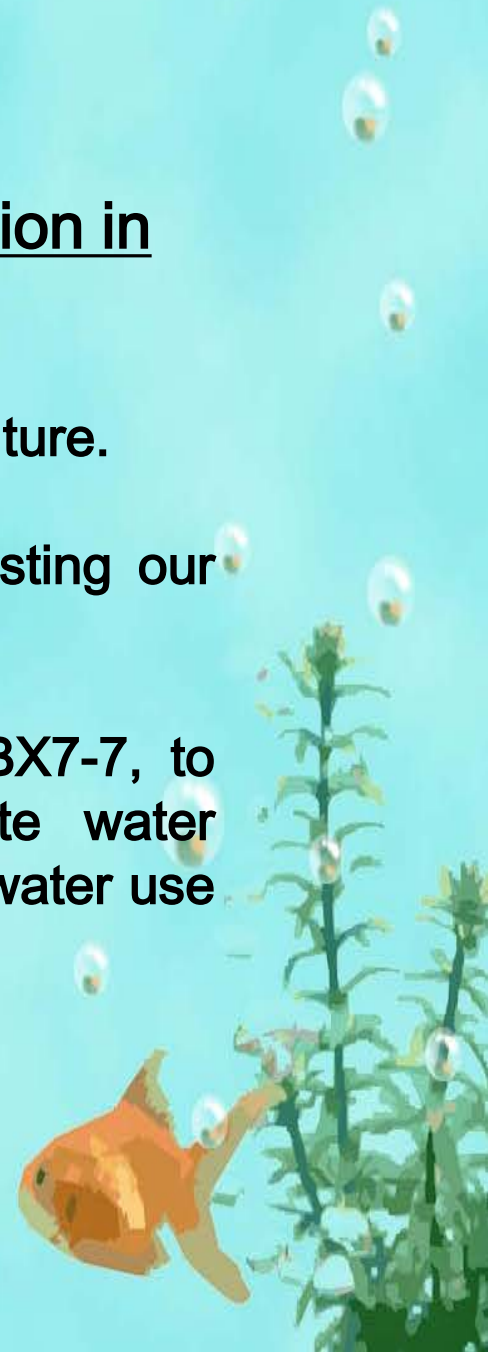


The Driving Forces Behind Water Conservation in California:

WATER SUPPLY ISSUES and potential issues in the future.

Being good stewards of the environment and not wasting our precious resources.

In 2009, the Governor signed legislation enacting SBX7-7, to encourage water agencies in California to promote water conservation to achieve a reduction of 20% per capita water use by 2020.



Best Management Practices

Investor owned water utilities in California are regulated by the California Public Utilities Commission. We are required to sign a memorandum of understanding with the California Urban Water Conservation Council (CUWCC) stating that we will adhere to the Best Management Practices (BMPs) for Conservation.

Two Types of BMPs:

- Foundational BMPs - Public Outreach and Education Programs.
- Programmatic BMPs - Residential, Commercial (CII) and Landscape Programs.



Program Overviews

School Theatre Program

High Efficiency Toilet Distribution Program

Indoor/Outdoor School Retrofit Program



School Theatre Program



**Suburban
Water Systems**

A SouthWest Water Company



National Theatre for Children Program

San Gabriel Valley Water Co. and Suburban Water Systems have contracted with NTC since 2009/2010. 15-20 schools per year.

- San Gabriel **approx. 60 schools, 24,000 students**
- Suburban **75 schools, approx. 30,000 students**

This is a great way to provide something for the kids within our service area and help encourage the conservation message for the younger generation.

Very favorable feedback from schools and teachers/staff.



High Efficiency Toilet Distribution Program



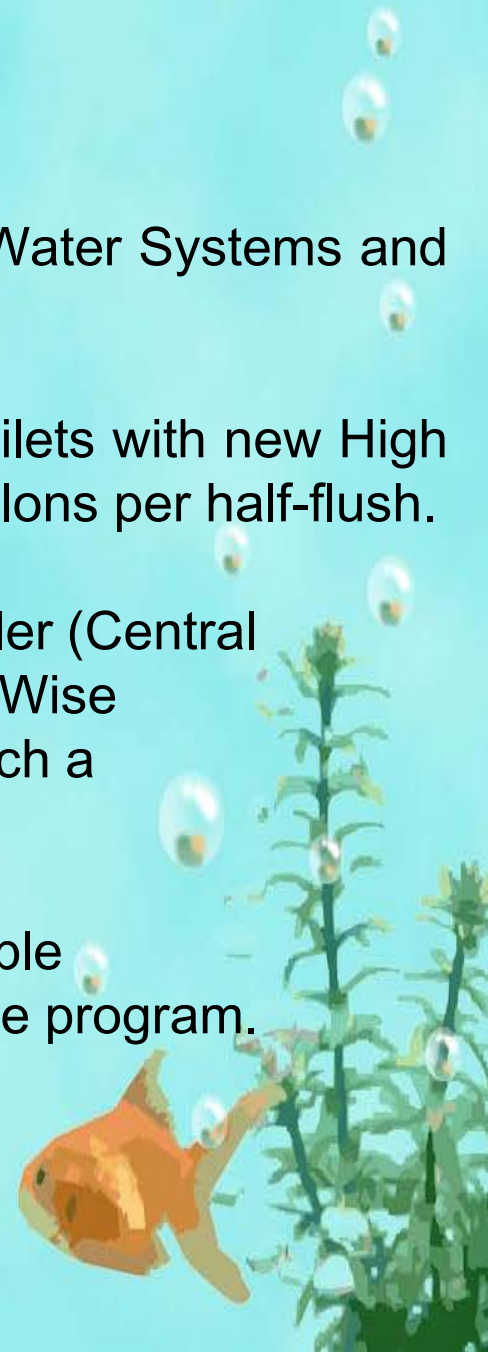
High Efficiency Distribution Program

WHO: Single-family customers of Park Water, Suburban Water Systems and San Gabriel Valley Water Co.

WHY: To help customers save water by replacing older toilets with new High Efficiency Toilets. (HETs) 1.28 gallons per full flush 0.8 gallons per half-flush.

HOW: All three water providers along with a local wholesaler (Central Basin Municipal Water District) and the consultant – WaterWise Consulting worked together to host a one day event at which a total of 791 HETs were distributed.

Additional Benefit: Local High School Football team was able to raise funds for new football uniforms by assisting with the program.



The three agencies selected the Norwalk High School Football Program as a mutual community based organization (CBO) to assist in this program and earn funding for team uniforms.

Duties include:

- Assist with customers verification and loading toilets
- Call customers to bring old toilets to recycled event
- Unload old toilets during recycled event





Suburban Water Systems created a unique program flyer for this event, "Is your toilet robbing you blind by wasting water?" which was inserted in water bills for approximately two weeks.



FREE HIGH EFFICIENCY TOILETS

Caroma
Sydney Smart 305 Round Front Plus
www.caromausa.com

Toilet Measurements



Time:

Saturday, May 22, 2010 starting at 8:00 am

Location:

Norwalk City Hall
12700 Norwalk Blvd. Norwalk, CA 90650



- Only for single-family residential customers served by Park Water Company are eligible to participate.
- You must bring a current water bill and photo ID. The water bill must show the name of the water company and the account number for the address where the HETs will be installed. Receipts, cancelled checks, homeowner association bills and/or utility bills do not qualify as a water bill.
- This program is only for the replacement of toilets that currently flush 3.5 gallons or higher.

- To complete your participation in this program, you must **return your old toilet on Saturday, June 5, 2010** between 8:00 am and 1:00 pm at the same location.
- New construction or renovations where a toilet was not previously installed do not qualify.
- There is a maximum of two free HETs per household.
- Supplies are limited and offered on a first-come, first-served basis.



For more information about this program, contact WaterWise toll free at 888-987-9473



Park Water Company included a message on water bills announcing the program and also distributed flyers during water-awareness week events in April 2010.






Caroma
Sydney Smart 305 Round Front Plus
www.caromausa.com

FREE HIGH EFFICIENCY TOILETS

Saturday, May 22, 2010 | Starting at 8:00 am

- Only customers of San Gabriel Valley Water Company within parts of Montebello, Whittier, Santa Fe Springs, Pico Rivera, Los Nietos and unincorporated areas of Los Angeles County are eligible to participate. Please contact WaterWise to verify eligibility.
- You must bring a current water bill and photo ID. The water bill must show the name of the water company and the account number for the address where the HETs will be installed. Receipts, cancelled checks, homeowner association bills and/or utility bills do not qualify as a water bill.
- This program is only for the replacement of toilets that currently flush 3.5 gallons or higher.
- To complete your participation in this program, you must **return your old toilet on Saturday, June 5, 2010** between 8:00 am and 1:00 pm at the same location.
- New construction or renovations where a toilet was not previously installed do not qualify.
- There is a maximum of 2 free HETs per household.
- Supplies are limited and offered on a first-come, first-served basis.

For more information, contact WaterWise toll free at

888-987-9473



Location: Norwalk City Hall

12700 Norwalk Blvd.
Norwalk, CA 90650



San Gabriel Valley Water Company sent more than 7,000 postcards to its customers. The direct-mail postcard by San Gabriel Valley Water Company was the most successful and brought the most program participants to the programs.



Total number of High Efficiency Toilets Distributed

Park Water Company	222
Suburban Water System	226
<u>San Gabriel Valley Water Company</u>	<u>343</u>
Total HETs	791

*Estimated Annual Water Savings 34AF

Old Toilet Recycling Event

- Old toilets returned were taken to a recycling facility.
- The ceramic of old toilets are ground down and used as a road base.
- Provide sustainable programs.



Benefit:

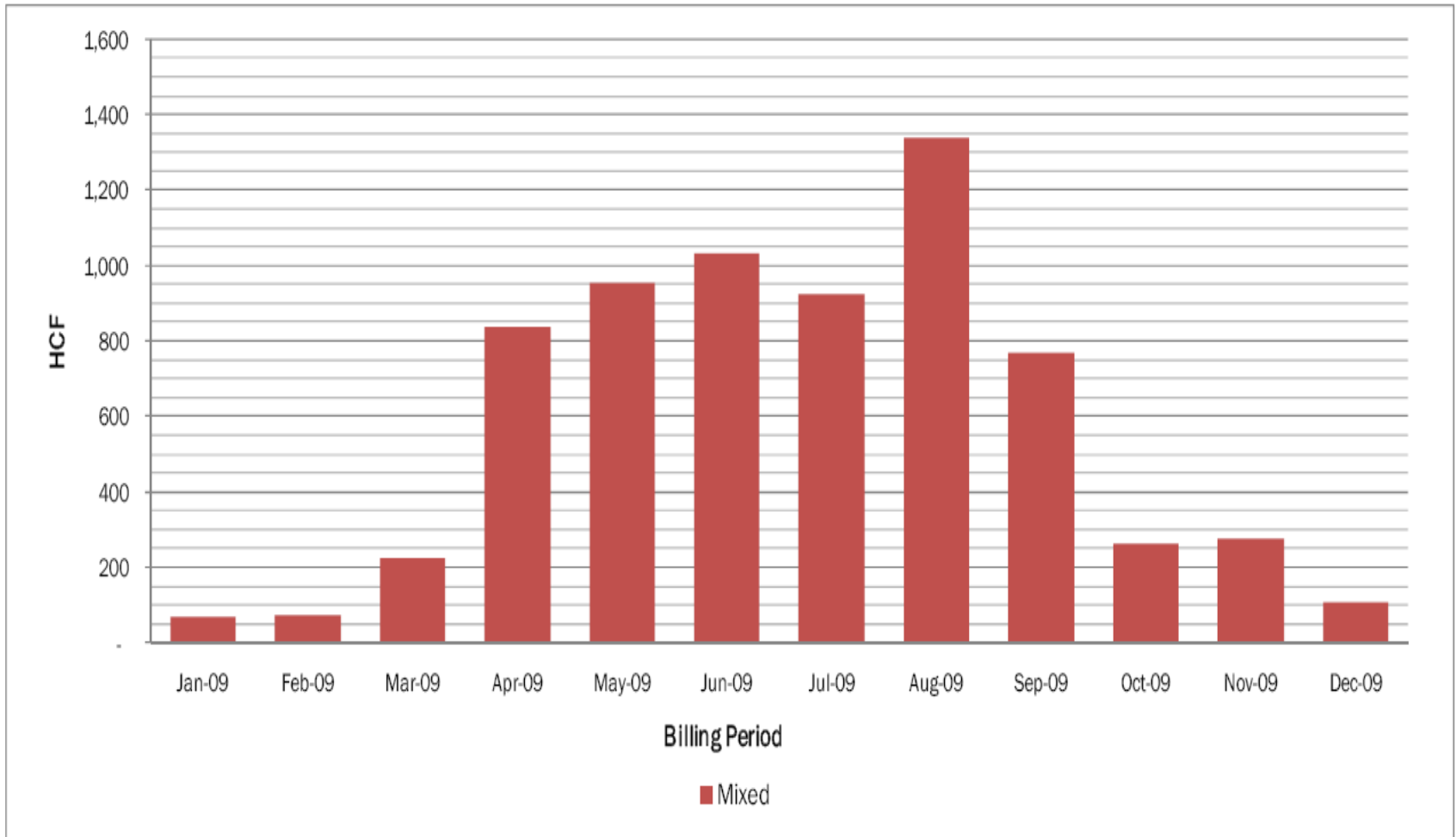
The Norwalk High School Football Program was presented with a check at the Norwalk City Council meeting for an amount of \$7,450 for their participation in the program.



Indoor/Outdoor School Retrofit Program



Figure 2– Water Use Trend— January 2009 to December 2009



Note: HCF=Hundred Cubic Feet, a standard unit of billing for water; 1 HCF is equivalent to 748 gallons of water.

Figure 1– Estimated Allocation of Water Use

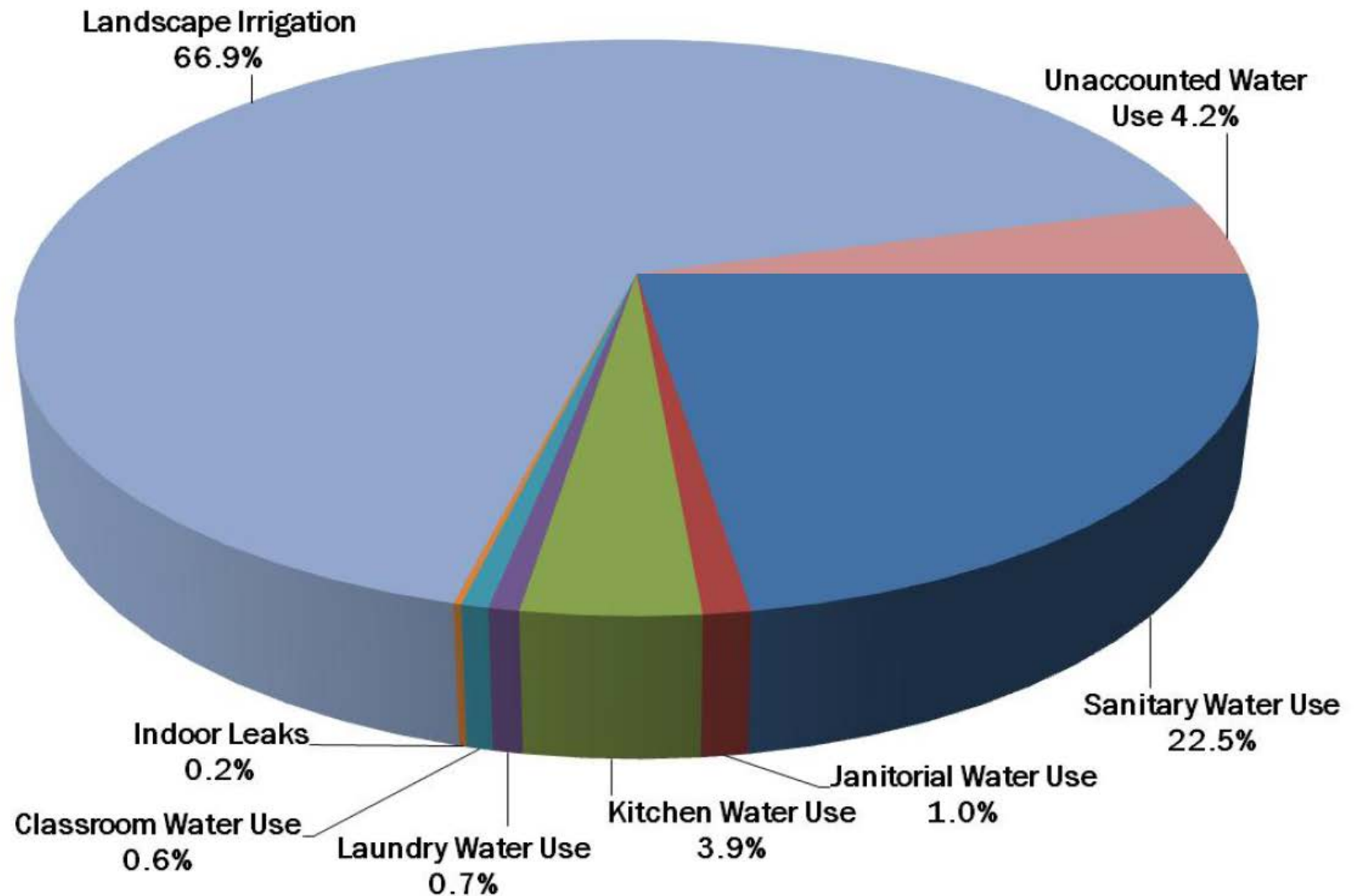


Table 1 - Inventory of Water-Using Equipment and Fixtures

Existing Equipment	QTY.	Volume Of Use		Annual Use (gal)	Annual Use (HCF)
		Use	Units		
Flush Valve Toilet	16	1.6	gpf	428,604	573
Flush Valve Toilet	17	3.5+	gpf	549,780	735
Waterless Urinal	12	0	gpf	-	-
Lavatory Faucet Aerator	1	0.5	gpm	2,244	3
Lavatory Faucet Aerator	21	1	gpm	97,240	130
Lavatory Faucet Aerator	4	15	gpm	31,416	42
Lavatory Faucet Aerator	3	20	gpm	35,904	48
Lavatory Faucet Aerator	2	2.5+	gpm	7,480	10
Drinking Fountain	26	0.5	gpm	5,236	7
Bathroom Cleaning Activities				13,464	18
Mop Slink Faucet	5	3.5	gpm	40,392	54
Air Cooled Ice Machine	1	22	gal/100bl	7,480	10
Pre-Rinse Spray Valve	1	16	gpm	40,392	54
Manual Dishwashing Faucets	3	2.5+	gpm	129,404	173
Hand Washing Faucets	2	2.5+	gpm	10,471	14
Kitchen Boiler Pots	3	80	gal/event	12,716	17
Top Loading Residential Washer	1	48	gal/load	34,408	46
Classroom Faucet Aerator	26	2.5	gpm	30,668	41
Faucet Leaks	1	25	gpd	8,976	12
Irrigation Controllers	1	30	stations	3,433,320	4,590
Unaccounted Water Use				216,172	289
Total Water Use:				5,135,767	6,866

Management Teams:

- Fontana Water Company – Provided funding and initial contact
- Inland Empire Utilities Agency – Managed funding and oversight
- Fontana Unified School District – Continued maintenance
- Consultants

Bottom Line Utility Solutions, Inc (Indoor)
Maureen Erbeznik & Associates (Outdoor)



Estimated Indoor Water Saving

Existing Device	Retrofit Device	Pre Consumption	Post Consumption	Savings Per Device	# Of Days In Avg. # Per Month	QTY.	Total Gallons Saved Per Year
3.5 GPF Wall Mt. Toilet	1.25 GPF Wall Mt. Toilet	3.5	1.28	2.22	30	6	79,920
3.5 GPF Flr. Mt. Toilet	1.28 GPF Flr. Mt. Toilet	3.5	1.28	2.22	30	3	39,960
3.5 GPF ADA Flr. Mt. Toilet	1.28 GPF ADA Flr. Mt. Toilet	3.5	1.28	2.22	30	2	26,640
1.6 GPF Flr. Mt. Toilet	1.28 GPF Flr. Mt. Toilet	1.6	1.28	.32	30	67	128,640
1.6 GPF ADA Flr. Mt. Toilet	1.28 GPF ADA Flr. Mt. Toilet	1.6	1.28	.32	30	57	109,440
1.5 GPF Urinal	0.125 GPF Urinal	1.5	0.125	1.375	30	5	41,250
1.0 GPF Urinal	0.125 GPF Urinal	1	0.125	.875	30	39	204,750
	Total in Savings Gallons						630,600
	Total in Savings (Acre-Feet)						2

Note: Total number of days is a school year 200.



Estimated Outdoor Water Saving

Existing Device	Retrofit Device	Saving Per Device Per Year (Gallons)	QTY.	Total Annual Savings (Gallons)	Total Annual Savings (Acre-Feet)
Standard Controller	Rainmaster GT Eagle Plus	3,157,471	3	9,472,413	29.07
Standard Controller	Rainmaster GT Eagle Plus	1,578,735	1	1,578,735	4.84
Standard Controller	Rainmaster GT Eagle Plus	1,052,490	1	1,052,490	3.23
Standard Controller	Rainmaster GT Eagle Plus	789,368	1	789,368	2.42
Standard Controller Pop Up Nozzle	Toro Precision Series High Efficiency Nozzle	1,303	175	228,096	0.7
<u>Total</u>				<u>13,121,102</u>	<u>40.26</u>



Questions?

Darleen Phares 626.543.2542

dphares@swwc.com



**Suburban
Water Systems**

A SouthWest Water Company

Tiffany Tran 626.774.2234

THTRAN@SGVWATER.COM



Tammie Myers 562.299.5126

Tammie@PARKWATER.com

