

# This presentation premiered at WaterSmart Innovations

[watersmartinnovations.com](http://watersmartinnovations.com)



WATER CONSERVATION TUTORIAL GARDENS

*Immersion Design*



Deneen Powell Atelier, Inc.



## WATER CONSERVATION TUTORIAL GARDENS

### *Immersion Design*

The creation of spaces with a comprehensive and interactive approach—utilizing visual clues, subtle messages, sculptural reinforcements and architectural enhancements to influence the visitor's natural experience. We develop curiosity while promoting education through art and the landscape. Whether the space is a quiet respite or an interactive revelry, we utilize multiple senses to create the desired return.

Combining landscape architecture, advertising and marketing, architectural components, environmental graphic design, interpretation, and sculpture, we immerse and educate through a range of techniques in multiple layers.



Deneen Powell Atelier, Inc.

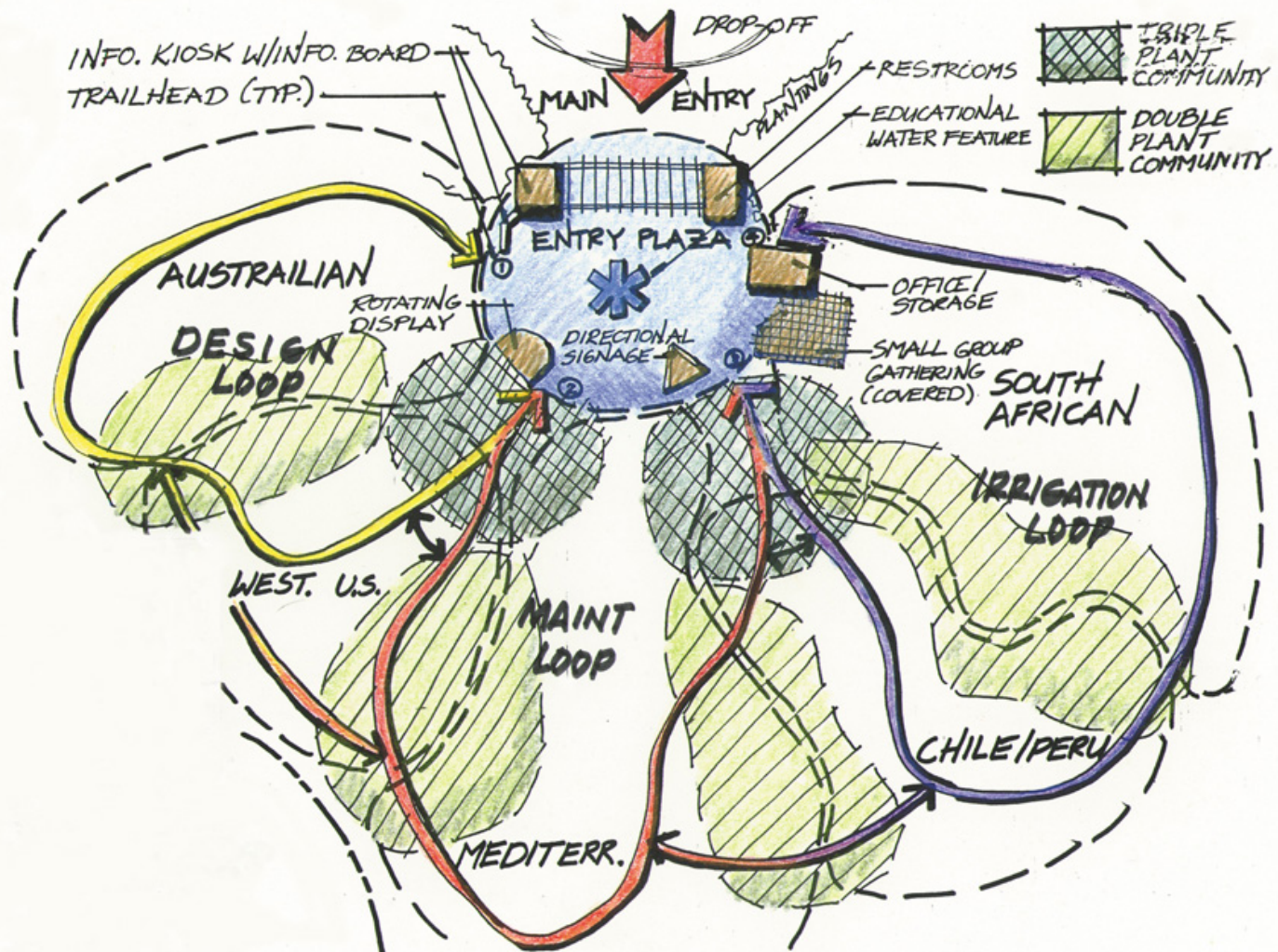
# *The Process*

## Chapter Outline & Site Design



Deneen Powell Atelier, Inc.





ENTRY / TRAIL LOOPS / PLANT COMM. 11/1/92





Danoran Powell Atollor, Inc.

**PHASE I — GARDEN PARK EXPANSION PROJECT**

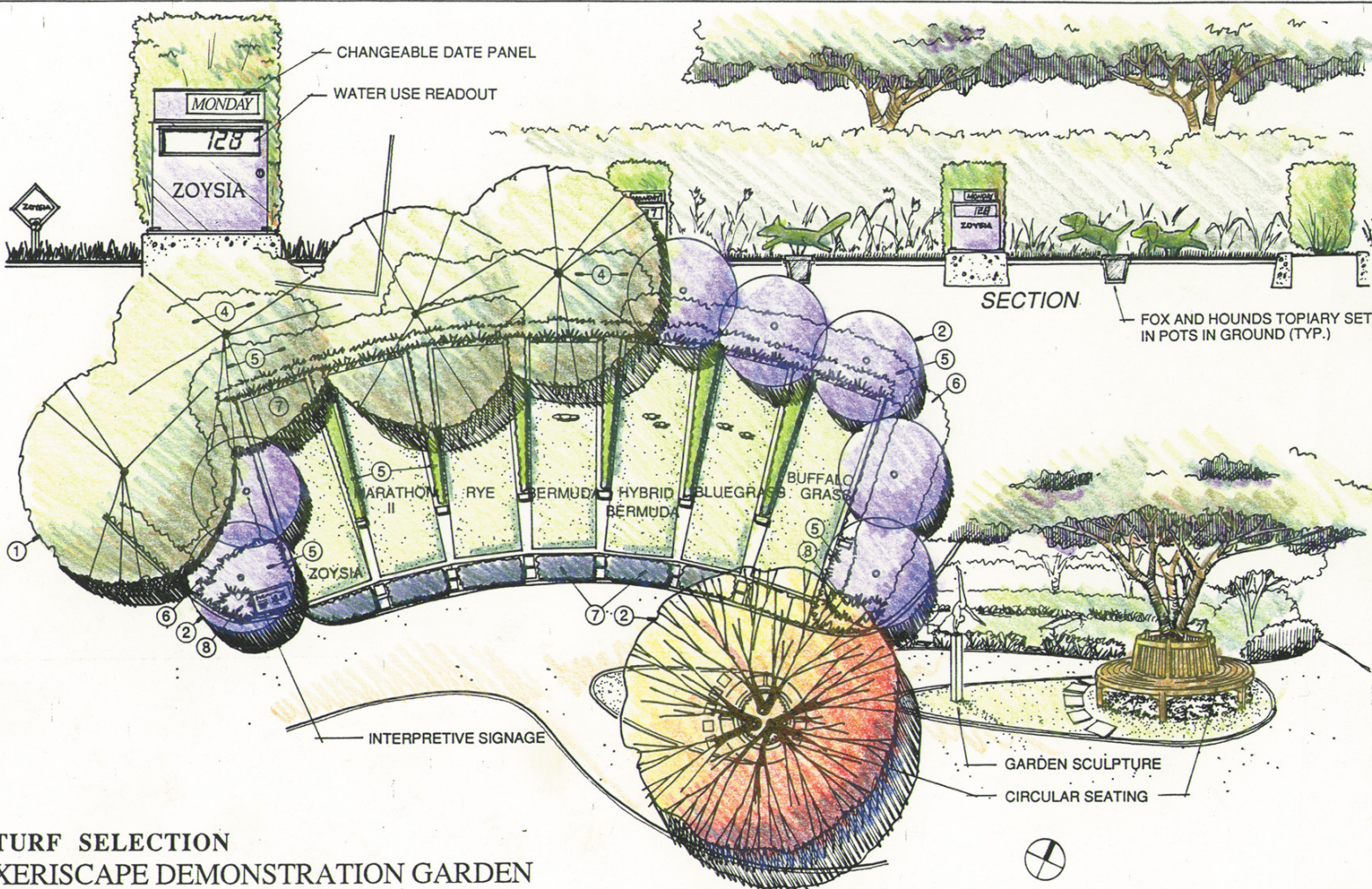
*Jordan Valley Construction, Garden Park*

**DOA**

NOV. 21, 2000 1:00 PM  
NOV. 21, 2000 1:00 PM  
NOV. 21, 2000 1:00 PM







CHANGEABLE DATE PANEL

WATER USE READOUT

MONDAY

128

ZOYSIA

SECTION

FOX AND HOUNDS TOPIARY SET  
IN POTS IN GROUND (TYP.)

ZOYSIA MARATHON II RYE BERMUDA HYBRID BERMUDA BLUEGRASS BUFFALO GRASS

INTERPRETIVE SIGNAGE

GARDEN SCULPTURE

CIRCULAR SEATING

**TURF SELECTION**  
**XERISCAPE DEMONSTRATION GARDEN**  
at CUYAMACA COLLEGE

SCALE: 1"=10'-0"



*The Water Conservation Garden*

El Cajon, California



Deneen Powell Atelier, Inc.







































*The Desert Living Center*

Las Vegas, Nevada



Deneen Powell Atelier, Inc.





























































# *The Water Conservation Garden Park*

Jordan Valley, Utah



Deneen Powell Atelier, Inc.



















































### Avoiding Erosion

When a slope is too steep, the soil will erode. This can be prevented by planting grasses and shrubs that hold the soil in place. The following are some tips for avoiding erosion:

- 1. Plant grasses and shrubs that hold the soil in place.
- 2. Use mulch to hold the soil in place.
- 3. Avoid walking on the slope.
- 4. Avoid driving on the slope.
- 5. Avoid parking on the slope.

The sign also features several small diagrams illustrating different erosion control techniques, such as planting grasses, using mulch, and building terraces.







































































*Holden Arboretum — Home Gardens*  
Sustainable Tutorial Gardens — Kirtland, Ohio



Deneen Powell Atelier, Inc.





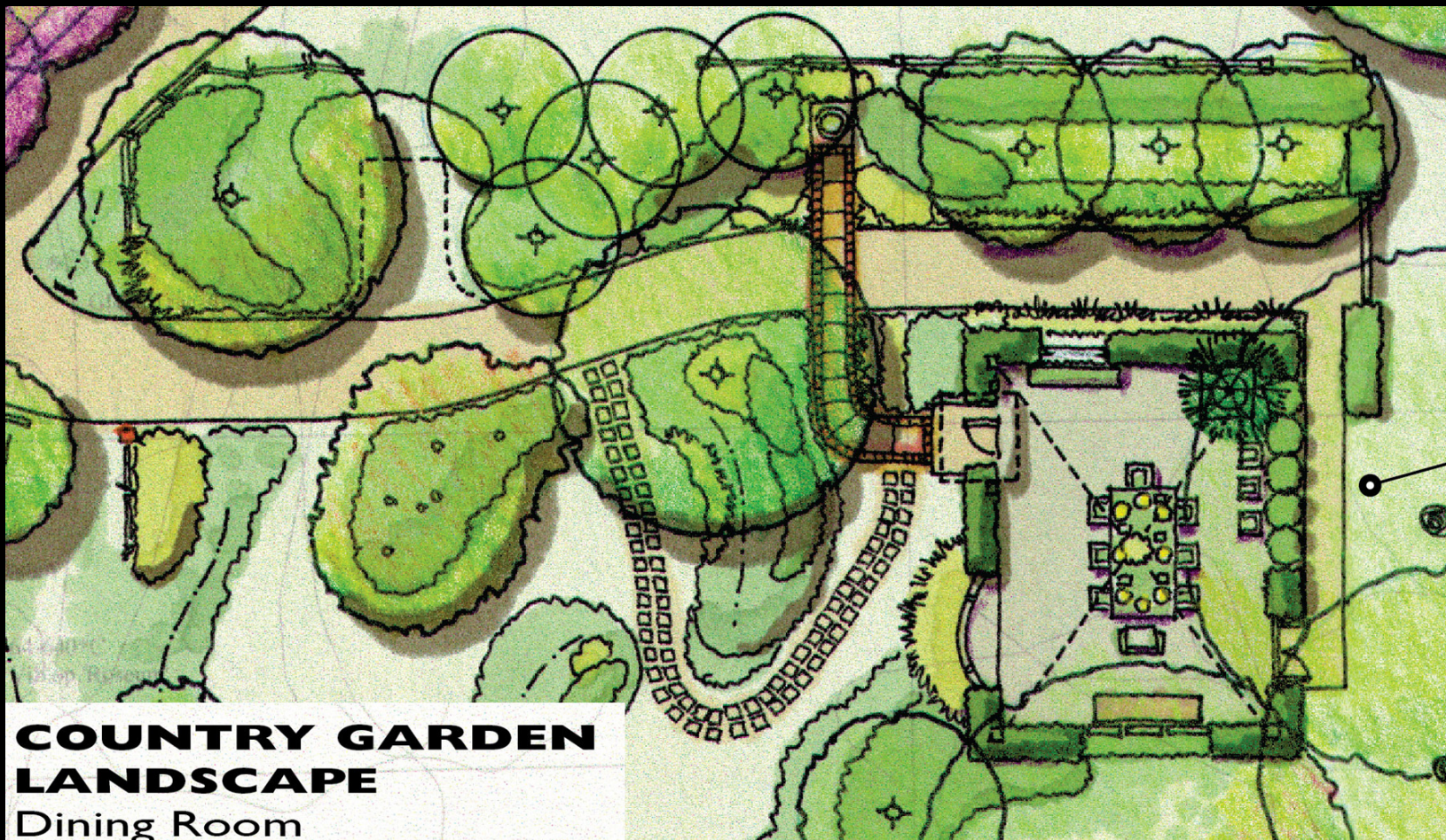








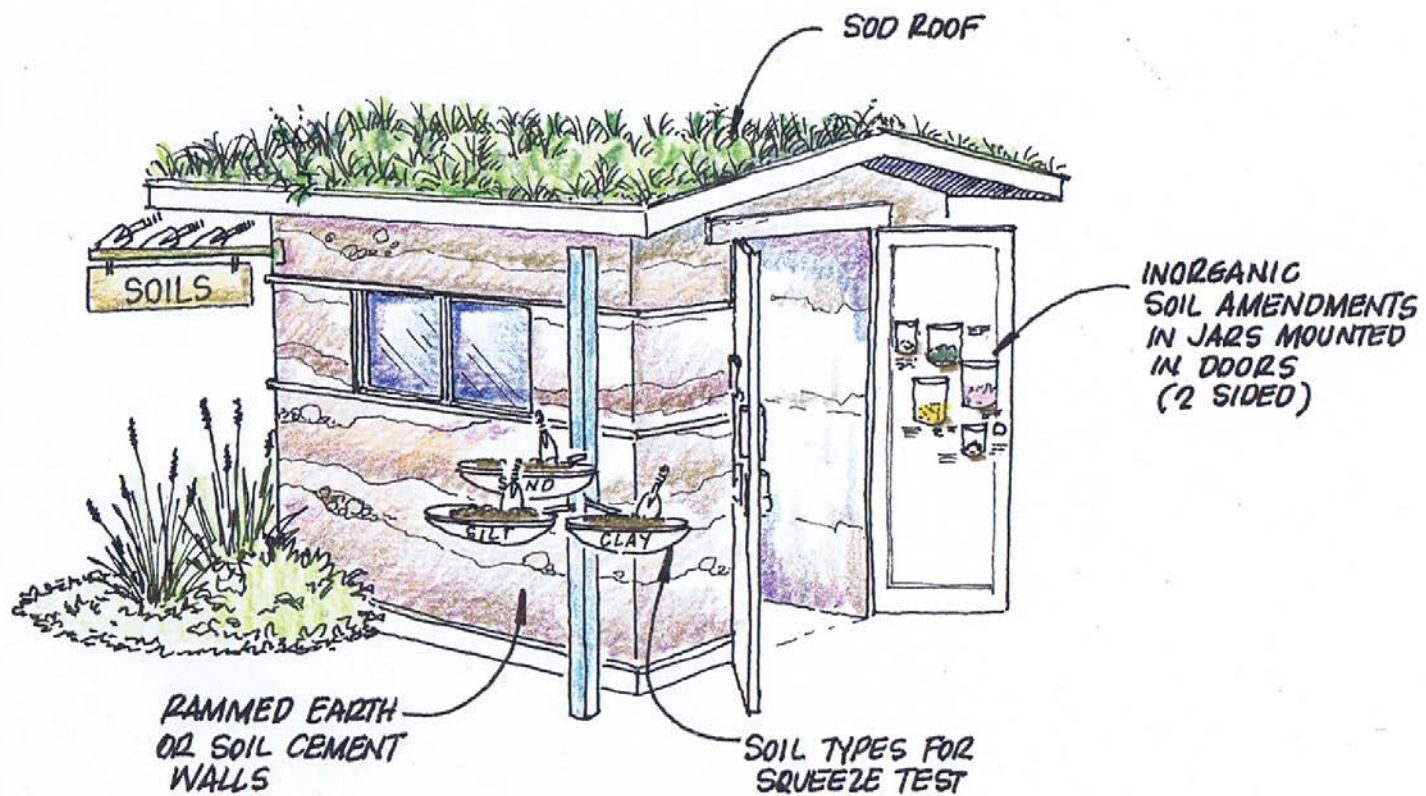




**COUNTRY GARDEN  
LANDSCAPE**

Dining Room





## HOW TO—SOILS

Garden Interpretive Shed

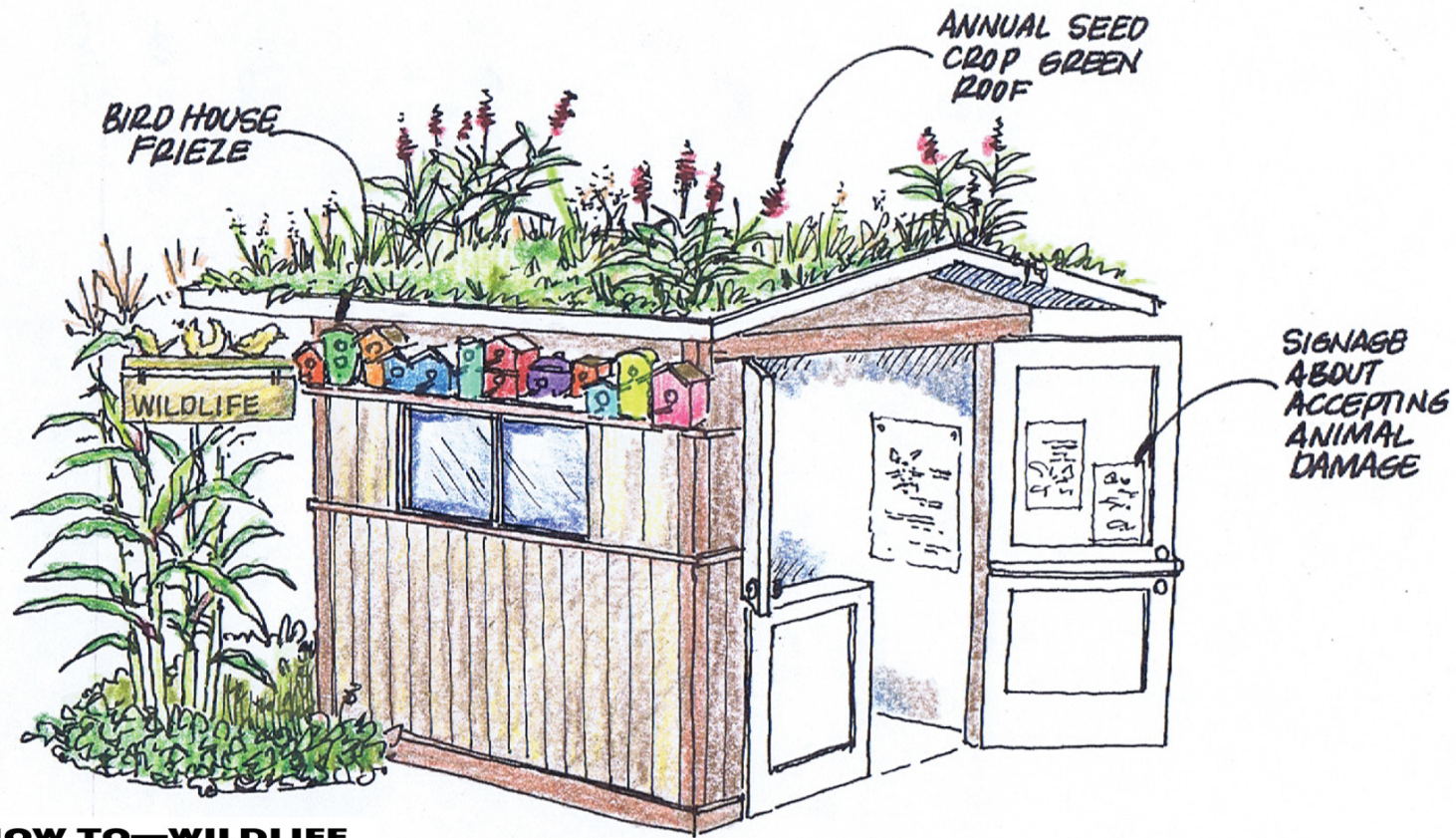




## **HOW TO—PLANT CARE**

Garden Interpretive Shed





**HOW TO—WILDLIFE**

Garden Interpretive Shed



























