

This presentation premiered at WaterSmart Innovations

watersmartinnovations.com





On-Line Landscape Water Budgets In Santa Barbara, CA



2006 CUWCC's Landscape Performance Reporting Tool Participants

Santa Barbara County Water Agency

City of Santa Barbara

Goleta Water District

Montecito Water District



❖ Objectives:

- Recruit agencies (water retailers) in California
- Offer Technical Assistance
- Explain the program, obtain customer information and data downloads
- Design website with data, reports and supporting pages
- Agency agrees to promote the program and provide or obtain some site measurements
- Upload landscape performance reports after every billing cycle



❖ Our Task

- Targeted to small and medium agencies
- Pilot program to develop a website (landscapebudgets.com)
- Based on lessons learned from the MWDOC LPCP program: waterbudgets.com

❖ Study shows 765 gallons/day savings



California Landscape Budgets

LandscapeBudgets.com



❖ Alison
Jordan



California Landscape Budgets

LandscapeBudgets.com

❖ Modules

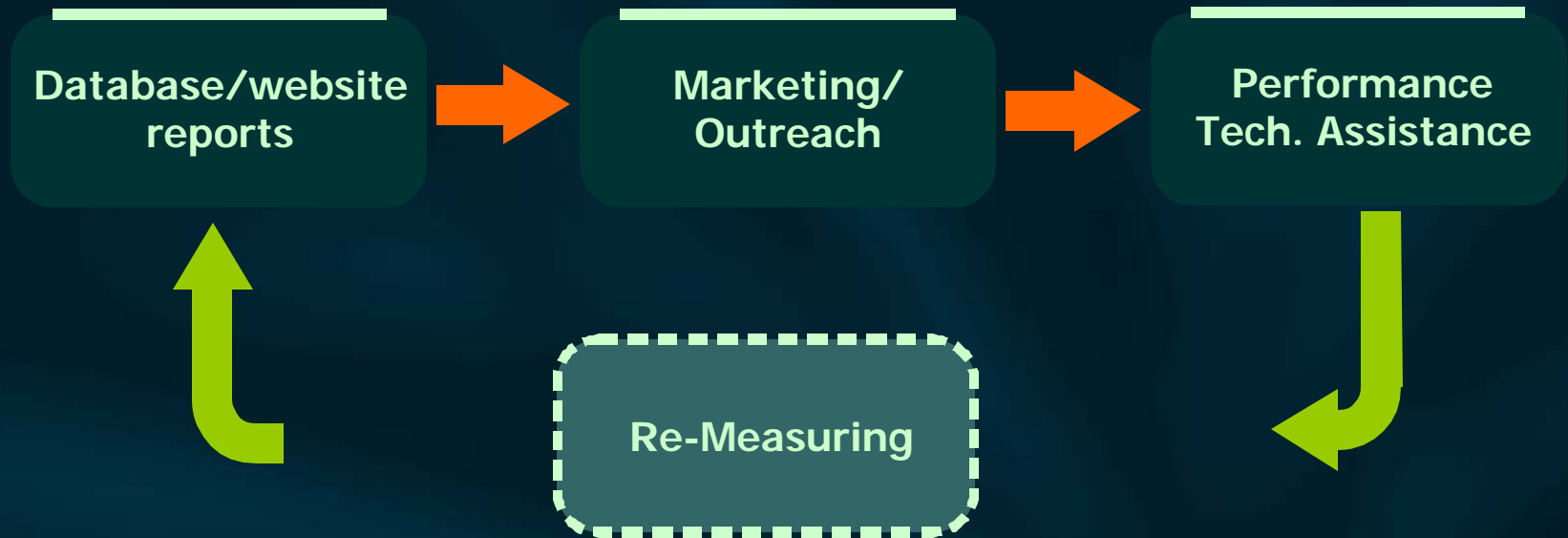
- Databases/website reports
- Outreach/marketing
- Tools, reports, tech. assistance

❖ Security, access



California Landscape Budgets

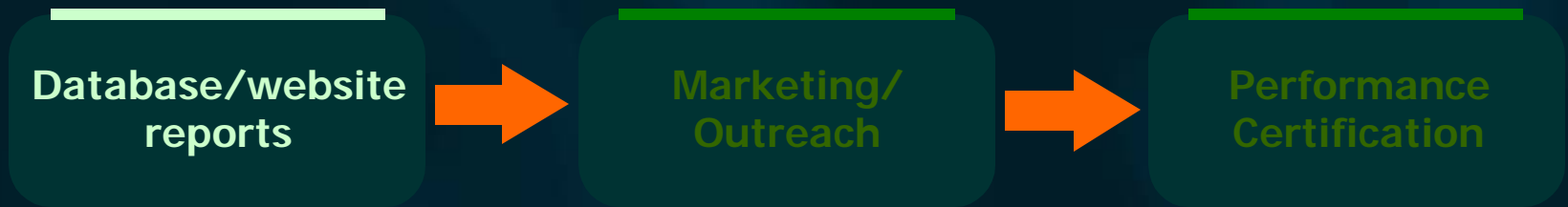
LandscapeBudgets.com





California Landscape Budgets

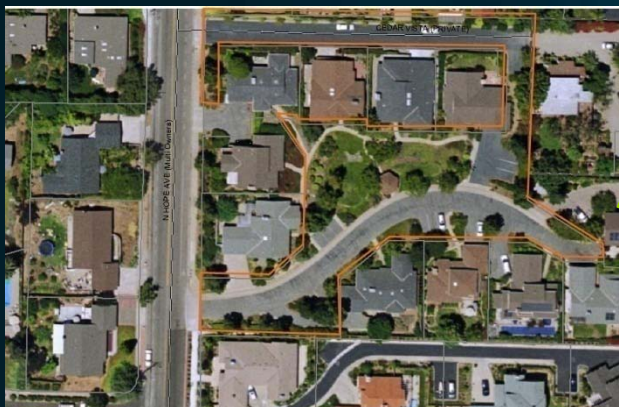
LandscapeBudgets.com





California Landscape Budgets

❖ How it Works:



Parcel # and Measurement

Water Agency Account Data

Monthly Consumption file

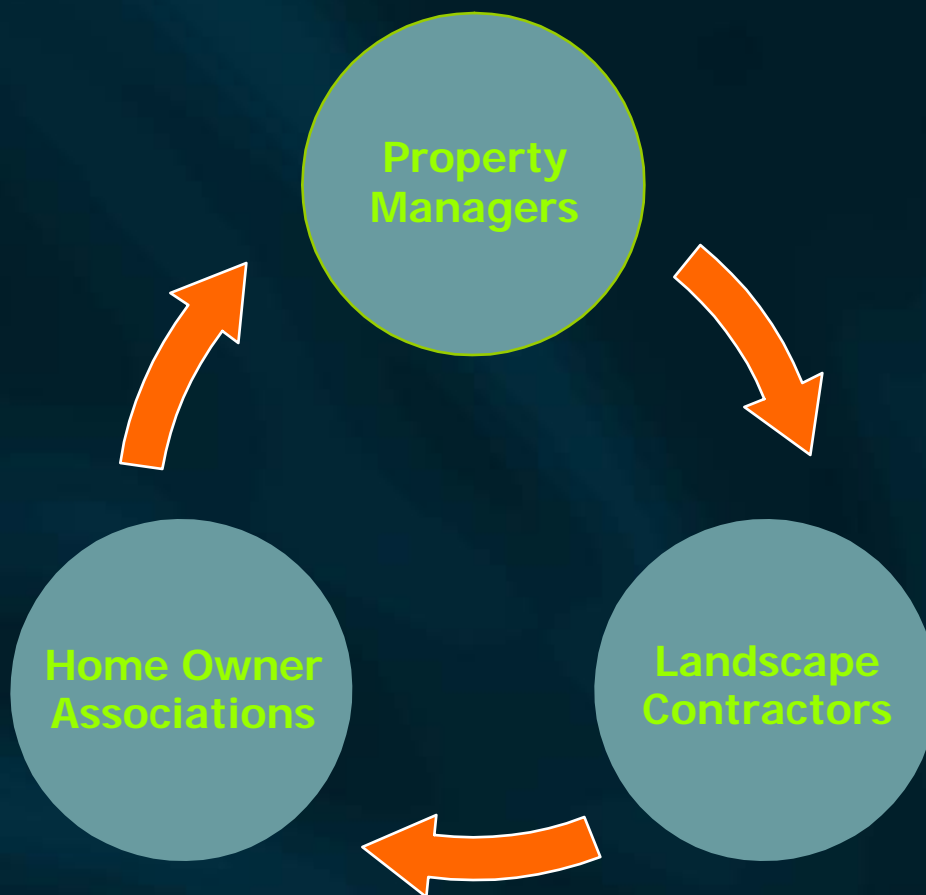


Website Reports updated



California Landscape Budgets

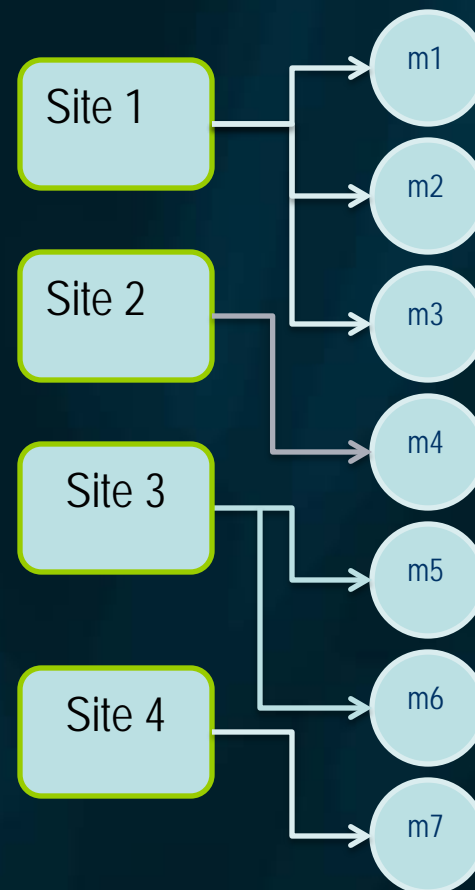
LandscapeBudgets.com





California Landscape Budgets

LandscapeBudgets.com



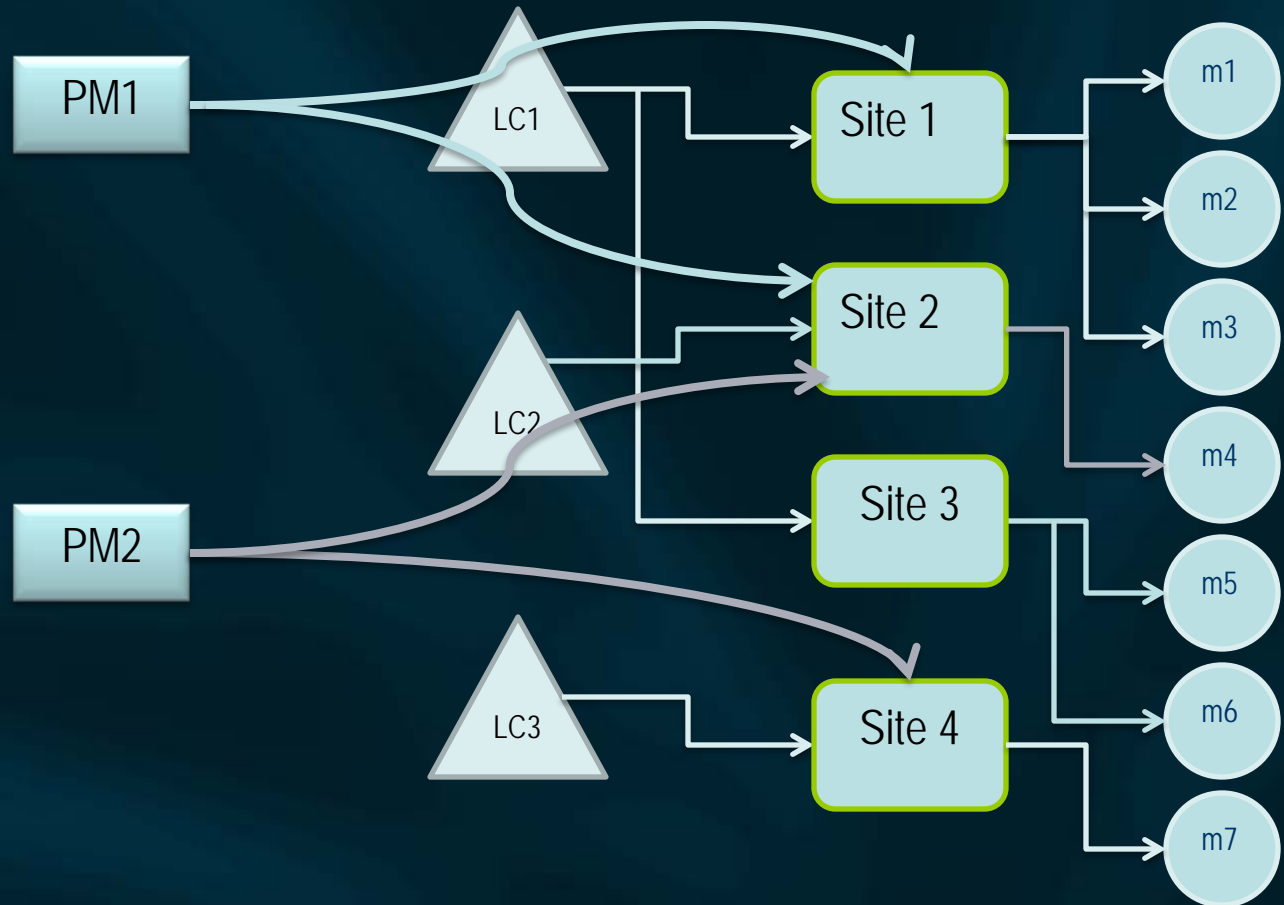


California Landscape Budgets





California Landscape Budgets





❖ The Landscape Budgets (Logging-in)

- Agency's water use efficiency manager screens
 - Customer's groups pull-down menus
 - Sites
 - Reports



California Landscape Budgets

LandscapeBudgets.com

Windows Internet Explorer browser window showing the LandscapeBudgets.com website.

Address bar: http://www.landscapebudgets.com/CUWCC_LB.htm

Navigation menu:

- INTRODUCTION
- RECOGNITION
- LINKS
- PARTICIPATING AGENCIES
- CONTACT US

Current Participants [Login](#)

Click on Your Landscape Management Position

- [Landscape](#)
- [Property Manager](#)
- [Home Owner Association](#)

ABOUT LandscapeBudgets

The Landscape Budgets Program is an easy way to achieve irrigation efficiency by:

- Easily tracking irrigation water use
- Help reduce water bills
- Improve the health, appearance and value of landscapes
- Protect the environment by decreasing urban runoff

You can now track the efficiency of irrigation systems using this FREE program. This on-line program identifies landscaped areas that are over watered by tracking monthly water use with a customized water budget.

Participants of this program receive a monthly Irrigation Performance Report.

Recent studies show that this program can save an average of 765 gallons of water per day.

[Sign up today](#) and start saving money.

[Introduction](#)



California Landscape Budgets

LandscapeBudgets.com

CA Landscape Budgets Program Irrigation Performance Report - Login - Windows Internet Explorer

http://www.waterbudgets.com/ConserVision/CUWCC/Landscape

File Edit View Favorites Tools Help

CA Landscape Budgets Program Irrigation Performanc...

Landscape Budgets.com

CA Landscape Budgets Program Irrigation Performance Report DATABASE LOGIN

Participating landscapers, property managers, waste haulers, homeowner associations, and water agencies/cities may login to the database to access their own data and view their progress.

Please enter your login information below to enter the database. If you do not have a user name and/or password, please write for [help](#).

User Name:

Password:

Position: -- Select Position --

For questions about the program, please contact [ConserVision](#). Please write to the [webmaster](#) for problems accessing the database or issues related to the web site.

Powered by:

CA Landscape Budgets Program Irrigation Performance Report - Data Menu - Windows Internet Explorer

http://www.waterbudgets.com/ConserVision/CUWCC/Landscape

File Edit View Favorites Tools Help

CA Landscape Budgets Program Irrigation Performanc...

Landscape Budgets.com

City of Santa Barbara Data Menu

▶ LANDSCAPERS

View by: Meter Table Site Table Meter Graph Site Graph

Acom Landscape Management Company

▶ PROPERTY MANAGERS

View by: Meter Table Site Table Meter Graph Site Graph

3791 STATE ST LLC

▶ HOMEOWNER ASSOCIATIONS

View by: Meter Table Site Table Meter Graph Site Graph

City of Santa Barbara parking Division

▶ SITES

View by: Meter Table Site Table Meter Graph Site Graph

1001 CHINO, LLC

▶ OVER BUDGET REPORT

Data as of current upload

▶ UNDER BUDGET REPORT

Data as of current upload

For questions about the program, please contact [ConserVision](#). Please write to [help](#) for problems accessing the database.



❖ The Landscape Budgets (cont'd)

- End user screens
 - Free area
 - Members' area
 - Meter View
 - Site View
 - Data Your Way
 - Bar Graph
 - Annual Budget



California Landscape Budgets

Meter View for BROOKS INSTITUTE - Windows Internet Explorer

http://www.waterbudgets.com/ConserVision/CLWCC/LU

File Edit View Favorites Tools Help

Meter View for BROOKS INSTITUTE

Meter/Accounts: 000017645F / 000064
Site Name: BROOKS INSTITUTE
Agency: City of Santa Barbara
Landscape: Not Signed Up Yet
Property Mgr.: BROOKS INSTITUTE
HOA: N/A
Site Address: 1300 ALAMEDA PADRE SERRA

Area (sq.ft.): 17,325
% Turf: 15%
Meter Type: Dedicated
CIMIS: 107
Controller Type:

Hold mouse over column headings for definitions.
 For a printer-friendly page, [CLICK HERE.](#)

Date Range	Current Use (ccf or hcf)	Rain (inches)	Site Budget (ccf or hcf)	Over or Under Budget (%)	Over or Under Budget (ccf or hcf)	Cost (\$)	Over or Under Cost (\$)
5/15/08 - 6/14/08	56	0.06	58	-3%	-2	255.60	-9.13
6/15/08 - 7/14/08	63	0.03	59	7%	4	291.00	18.86
7/15/08 - 8/14/08	71	0.04	54	31%	17	335.72	80.38
8/15/08 - 9/14/08	60	0.03	43	40%	17	282.48	80.04
9/15/08 - 10/14/08	46	0.01	34	35%	12	214.72	56.01
10/15/08 - 11/14/08	46	1.05	28	64%	18	214.72	84.02
11/15/08 - 12/14/08	32	1.09	16	100%	16	147.20	73.60
12/15/08 - 1/13/09	18	0.95	15	20%	3	82.80	13.80
1/14/09 - 2/13/09	7	3.33	21	-67%	-14	32.20	-64.40
2/14/09 - 3/13/09	24	3.34	25	-4%	-1	110.40	-4.60
3/14/09 - 4/13/09	29	0.63	41	-29%	-12	133.40	-53.20
4/14/09 - 5/13/09	52	0	53	-2%	-1	243.76	-4.69
5/14/09 - 6/13/09	26	0.04	39	-33%	-13	119.60	-59.80
Totals for selected date range:					44		208.89

Positive #s on total line = over budget/cost. Recommend evaluating irrigation system.
Negative #s on total line = under budget/cost = water/money savings.
Over budget? Click [here](#) for tools to help you cut down on water use.

DATA MENU SITE VIEW METER GRAPH SITE GRAPH DATA YOUR WAY HELP

CA Landscape Budgets Program Irrigation Performance Report - Meter Graph - Windows Internet Explorer

http://www.waterbudgets.com/ConserVision/CLWCC/LU

File Edit View Favorites Tools Help

CA Landscape Budgets Program Irrigation Performance...

CA Landscape Budgets Program Irrigation Performance Report CITY OF SANTA BARBARA PARKS DIVISION

To view data based on a specific year, select meter/year and then click 'View Selected Year' button.
 To view data based on the long-term averaged data, select meter and then click 'View Averaged Data' button.

000017010F 1999 >> View Selected Year OR View Annual Budget

2008 Monthly Comparison Actual Use and Site Budget for Meter #000017010F (ccf)

Actual Use Site Budget

DATA MENU METER VIEW SITE VIEW SITE GRAPH DATA YOUR WAY HELP



California Landscape Budgets

CA Landscape Budgets Program Irrigation Performance Report - Data Search - Windows Internet Explorer

http://www.waterbudgets.com/ConserVision/CUWCC/LandscapeProg

File Edit View Favorites Tools Help

CA Landscape Budgets Program Irrigation Performanc...

CA Landscape Budgets Program Irrigation Performance Report

Data Search

► **Select Criteria:** Check the box next to each criterion you want applied. If the box isn't checked, the criterion won't be applied.

► **Submit Request:** After selecting your criteria, click on Submit button.

CITY OF SANTA BARBARA PARKS DIVISION

Show meters needing improvement*

(enter number in either one box or both boxes below)

Show meters % or more **OVER** budget.

Show meters % or more **UNDER** budget.

Show meters for a specific date range*

(enter date as mm/dd/yy)

From:

To:

Show only specific meters*

(select one or more below)

- 000004866F
- 000005118D
- 000005305D
- 000005574D
- 000005579D
- 000005600D

* Results are expressed in Monthly Consumption for the dates selected

For questions about the program, please contact [ConserVision](#). Please write to the [webmaster](#) for problems accessing the database or issues related to the web site.

DATA MENU
 METER VIEW
 SITE VIEW
 METER GRAPH
 SITE GRAPH
 HELP

CA Landscape Budgets Program Irrigation Performance Report - Data Search Result - Windows Internet Explorer

http://www.waterbudgets.com/ConserVision/CUWCC/LandscapeProg

File Edit View Favorites Tools Help

CA Landscape Budgets Program Irrigation Performanc...

CA Landscape Budgets Program Irrigation Performance Report

SEARCH RESULT

CRITERIA APPLIED:

- Show meters handled by: **CITY OF SANTA BARBARA PARKS DIVISION**
- Show meters 125% or more over budget
- Show meters with period ending date between 01/01/09 and 06/30/09

Meter #	Month Ending	Current Use	Site Budget	# of CCFs Over Site Budget	% of Site Budget
000005779D	1/13/2009	22	8	14	275%
000972767F	1/13/2009	30	11	19	273%
040409952F	1/13/2009	13	4	9	325%
040409952F	2/13/2009	16	6	10	267%
040409952F	3/13/2009	16	7	9	229%
040409952F	4/13/2009	37	11	26	336%
040409952F	5/13/2009	36	14	22	257%
040409952F	6/13/2009	34	11	23	309%

<< SET SEARCH CRITERIA AGAIN

Please write to the [webmaster](#) for problems accessing the database or issues related to the web site.

DATA MENU
 METER VIEW
 SITE VIEW
 METER GRAPH
 SITE GRAPH
 HELP



California Landscape Budgets

LandscapeBudgets.com





❖ Outreach/Marketing

- Accounts within reasonable acreage
 - Sample letter objectives
 - Your budgets are up
 - Sign in yourself and everybody involved
 - Sample report
 - Form parts



California Landscape Budgets



City of Santa Barbara Public Works Department

www.ci.santa-barbara.ca.us

Main Offices
Tel: 805.564.5377
630 Garden Street
P.O. Box 1990
Santa Barbara, CA
93102-1990

Administration
Tel: 805.564.5377
Fax: 805.897.2613

Engineering
Tel: 805.564.5363
Fax: 805.564.5467

Facilities
Tel: 805.564.5415
Fax: 805.897.2577

Street Maintenance
Tel: 805.564.5413
Fax: 805.897.1991

Transportation Operations
Transportation Planning
Tel: 805.564.5385
Fax: 805.564.5467

Water Resources
Tel: 805.564.5413
Fax: 805.897.1991

Water Supply Mgmt.
Tel: 805.564.5480
Fax: 805.897.2613

Downtown Parking
1115 Anacapa Street
Santa Barbara, CA
93101
Tel: 805.963.1581
Fax: 805.963.1542

August 17, 2009
MORRIS SOBHANI
SOBHANI, MORRIS
204 RAMETTO RD
SANTA BARBARA, CA 93108

SUBJECT: FREE California Landscape Budgets Program

Attn. MORRIS SOBHANI:

Do you know how much you paid for water last year? Do you know how much you should have paid? The City of Santa Barbara is pleased to introduce the California Landscape Budgets Program - a FREE water management tool. Participants track their irrigation meter's monthly water use and compare it to a custom water budget which demonstrates how close your irrigation was to the needs of your plants. This enables you to identify over watered areas and enhances accountability to property owners and/or homeowner association boards. Participants can access an online monthly Irrigation Performance Report to:

- Easily track irrigation water use
- Help reduce water bills
- Improve the health, appearance and value of landscapes
- Protect the environment by decreasing urban runoff

Attached is a sample report of one of your accounts' water use performance. You'll be able to access these FREE reports on-line at www.landscapebudgets.com any time as soon as you are signed up for the program.

Save Water, Save Money

A recent study shows that irrigation meters participating in this program save an average of 765 gallons of water per day compared to those meters that are not part of this program. This equates to a savings of over \$100 per month.

Log-in and Start Monitoring Your Site's Performance!

We've created a username and password for you to log-in. Just follow these simple steps:

1. Go to www.landscapebudgets.com, click on the Santa Barbara area
2. Click on the **log-in** button
3. Username: **sohanris**, Password: **3117**, Position: **Owner/Property Manager**

For more information, call (805) 564-5574, email: AJordan@SantaBarbaraCA.gov or visit www.landscapebudgets.com.

Sincerely,

A Jordan

Alison Jordan
Water Conservation Coordinator

AJ/xx

Attachments

CA Landscape Budgets Program Irrigation Performance Report www.landscapebudgets.com

Meter/Account: 020304280E / 021466A
Site Name: City of Santa Barbara Downtown Parking Division
Agency: City of Santa Barbara
Landscaper: City of Santa Barbara Downtown Parking Division
Property Mgr.: City of Santa Barbara Downtown Parking Division
HOA: N/A
Site Address: Lot 5

Area (sq.ft.): 11,805
% Turf: 62%
MeterType: Dedicated
CIMIS: 107
Controller Type:

DATE RANGE	CURRENT USE (ccf or hcf)	RAIN (inches)	SITE BUDGET (ccf or hcf)	OVER OR UNDER BUDGET (%)	OVER OR UNDER BUDGET (ccf or hcf)	COST (\$)	OVER OR UNDER COST (\$)
2/15/06 - 3/14/06	3	5.07	20	-85%	-17	5.85	-33.15
3/15/06 - 4/14/06	N/A	8.29	27	NA	-27	0.00	0.00
4/15/06 - 5/14/06	N/A	0.65	30	NA	-30	0.00	0.00
5/15/06 - 6/14/06	N/A	1.02	42	NA	-42	0.00	0.00
6/15/06 - 7/14/06	2	0	51	-96%	-49	4.04	-98.98
7/15/06 - 8/14/06	2	0.14	45	-96%	-43	4.04	-86.86
8/15/06 - 9/14/06	4	0.06	40	-90%	-36	8.08	-72.72
Totals for selected date range:						-244	-\$291.71

Positive #s on total line = over budget/cost. Recommend evaluating irrigation system.
Negative #s on total line = under budget/cost = water/money savings.

DATE RANGE: The Utility's (i.e. Water Supplier) Metered Usage Interval. The Metered Usage Interval normally corresponds to the Utility's Billing Interval.

CURRENT USE: Metered Usage (CCF or HCF) of water in the Billing Interval as recorded by the Water Supplier. One CCF or HCF equals 100 cubic feet; one cubic foot equals 7.48 gallons.

RAIN: The amount of rain (inches) that fell during the interval, measured at the associated weather station and attributed to the User's Site.

SITE BUDGET: The amount of water (CCF or HCF) estimated by the program as needed for the specific landscaped area of the meter, adjusted (prorated on a daily basis) to the Utility's Billing Interval. One CCF or HCF equals 100 cubic feet; one cubic foot equals 7.48 gallons.

OVER OR UNDER BUDGET (%): The amount of water applied, over or under the budget, expressed as a percentage of the site budget. The site budget = 100%. Minus indicates under budget.

OVER OR UNDER BUDGET (ccf or hcf): The amount of water (CCF or HCF) estimated by the program as needed for a meters specific landscaped area, adjusted (prorated on a daily basis) to the Utility's Billing Interval. One CCF or HCF equals 100 cubic feet; one cubic foot equals 7.48 gallons.

COST: The total dollar amount of the water used. Based on specific agencies' rate structures.
OVER OR UNDER COST: The actual dollar amount spent, as related to the expected site budget costs. Over or under costs are estimated based on total water monthly charge.



California Landscape Budgets

Site Information

Site Name	Del Paseo HOA
City of SB	MNWD
ET Station	107

Contact Information

Property Manager Company:		
PM-F_name		* PM-User_name
PM-L_Name		* PM-Password
PM-Address		* PM-e-mail
PM-City		PM-Phone
PM-Zip		PM-Fax

Landscape Company:		
LC-F_name		* LC-User_name
LC-L_Name		* LC-Password
LC-Address		* LC-e-mail
LC-City		LC-Phone
LC-Zip		LC-Fax

HOA:		
		* HOAC-User_name
		* HOAC-Password
HOA-Address		* HOAC-e-mail
HOA-City		HOAC-Phone
HOA-Zip		HOAC-Fax



California Landscape Budgets

LandscapeBudgets.com

❖ Alison Jordan





California Landscape Budgets

LandscapeBudgets.com





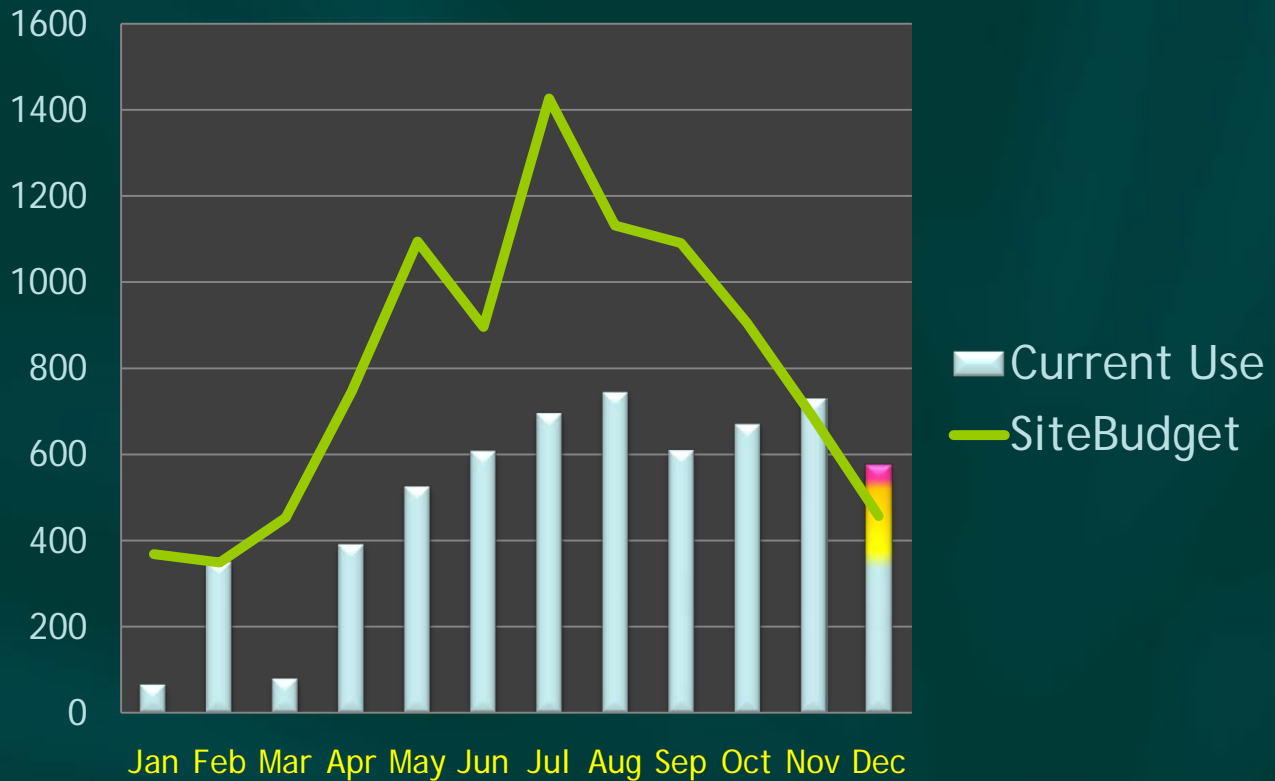
❖ Technical Assistance

- Talking to City of SB Staff
 - Local assistance (measuring)
 - Dialogue to improve efficiency



California Landscape Budgets

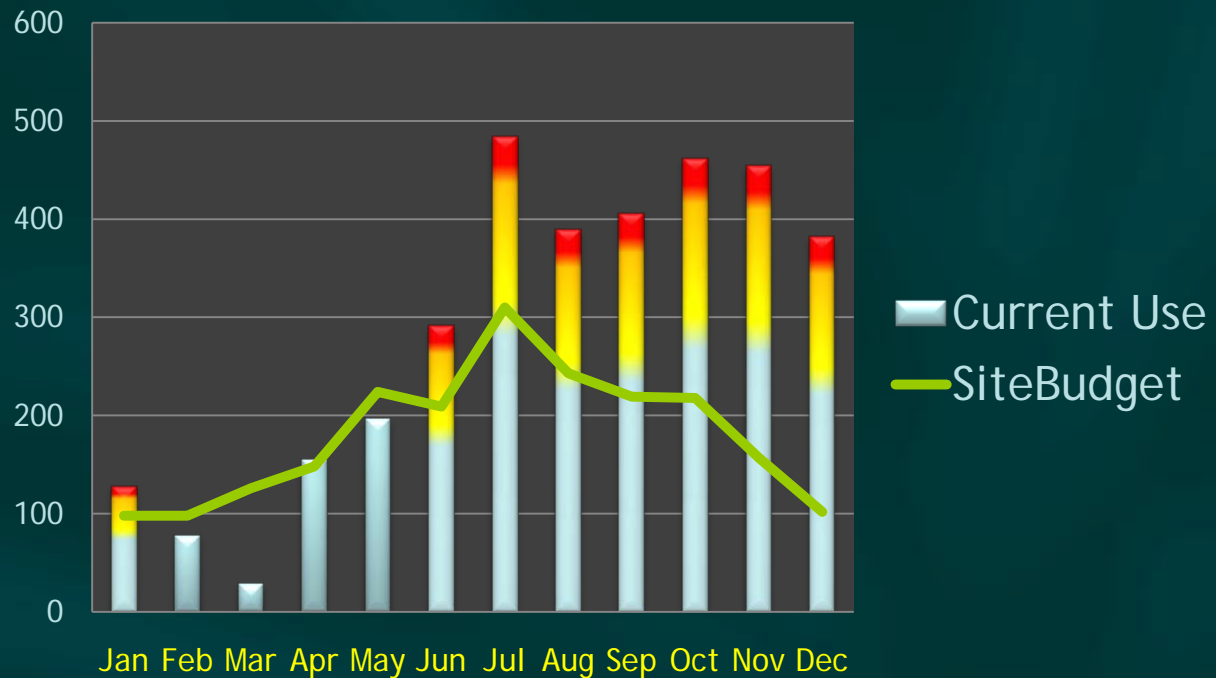
Typical Under-Watering 62% of Budget





California Landscape Budgets

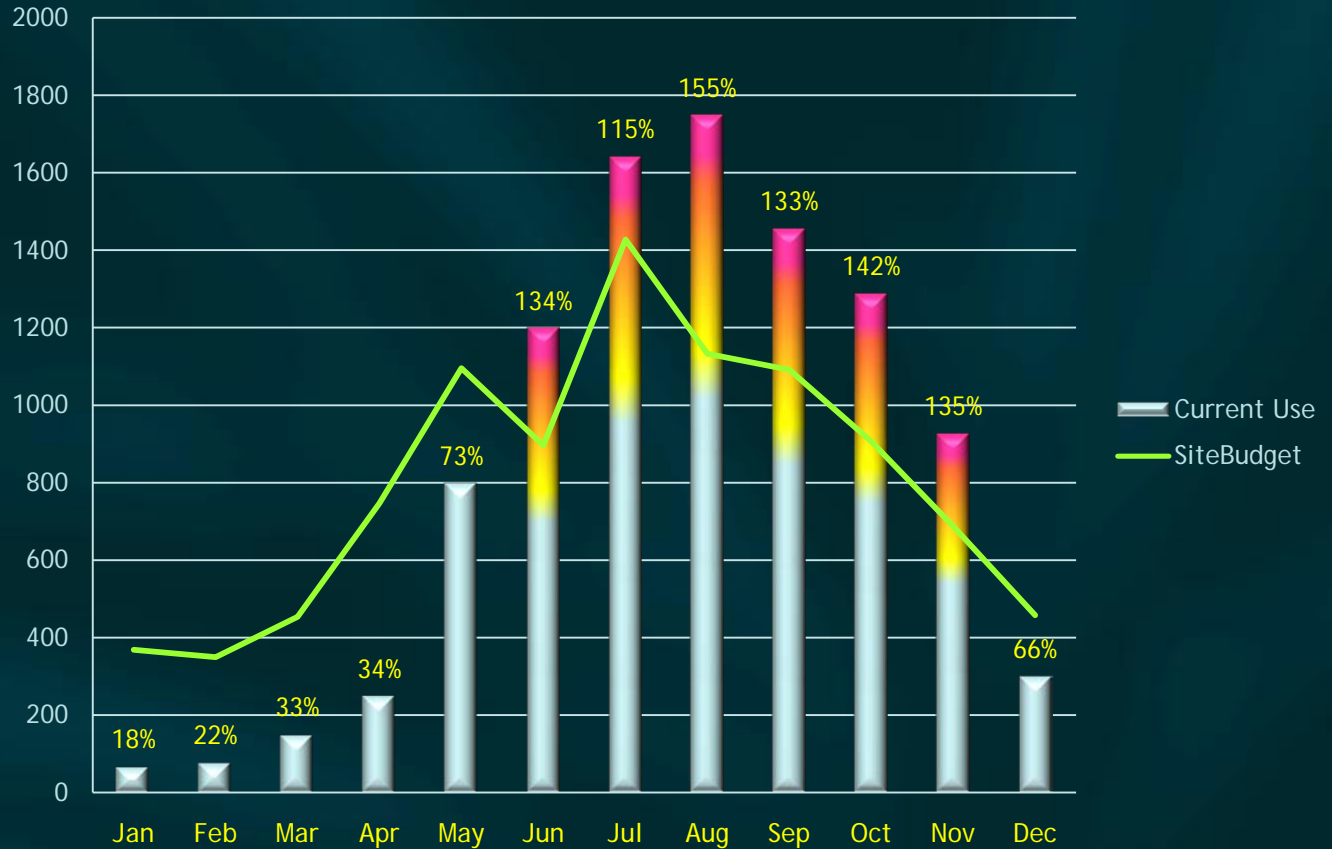
Typical Over-Watering 160% of budget



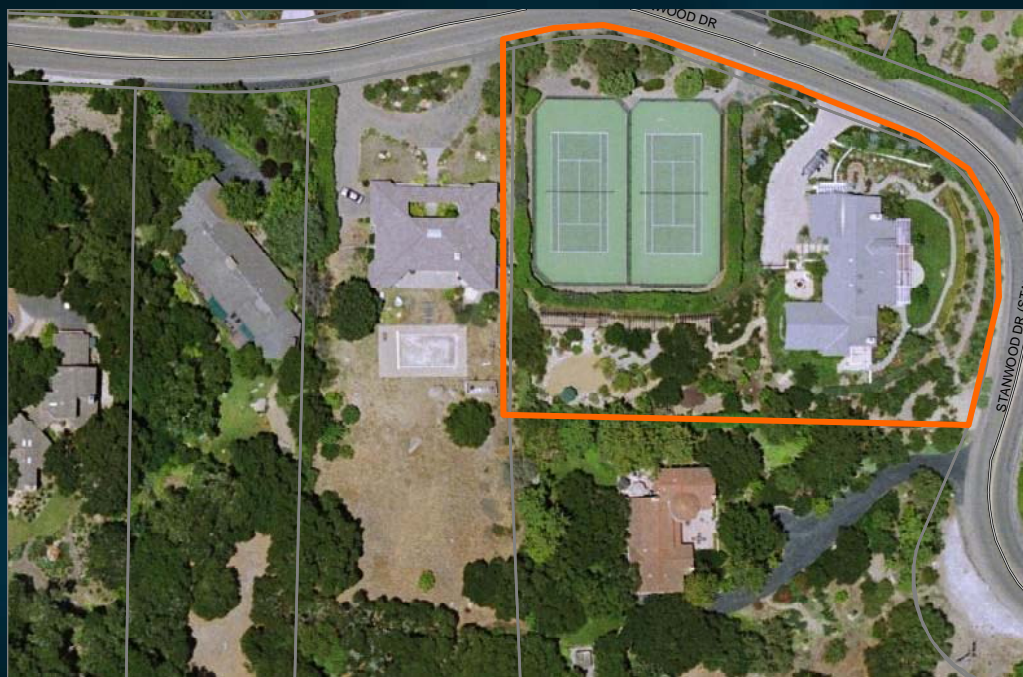


California Landscape Budgets

Close to Budget (103%), but Over in the Summer



❖ Re-Measuring Sites (fine-tuning)





California Landscape Budgets

LandscapeBudgets.com

❖ Alison
Jordan





❖ Program Results:

Sites	Meters	Total Acres	Tot Turf Acres
502	716	1,165.98	444.07

Sites	Count	Acres	No of e-mails
Receiving Emails	69	317.03	79
Receiving Letters	168	108.19	n/a
To Verify	265	740.76	n/a

❖ Estimated Savings: 324.8 AF/ Year



California Landscape Budgets

LandscapeBudgets.com



❖ Alison Jordan



Next Steps

- Social Networking
- CIMIS Eto by Zip-code