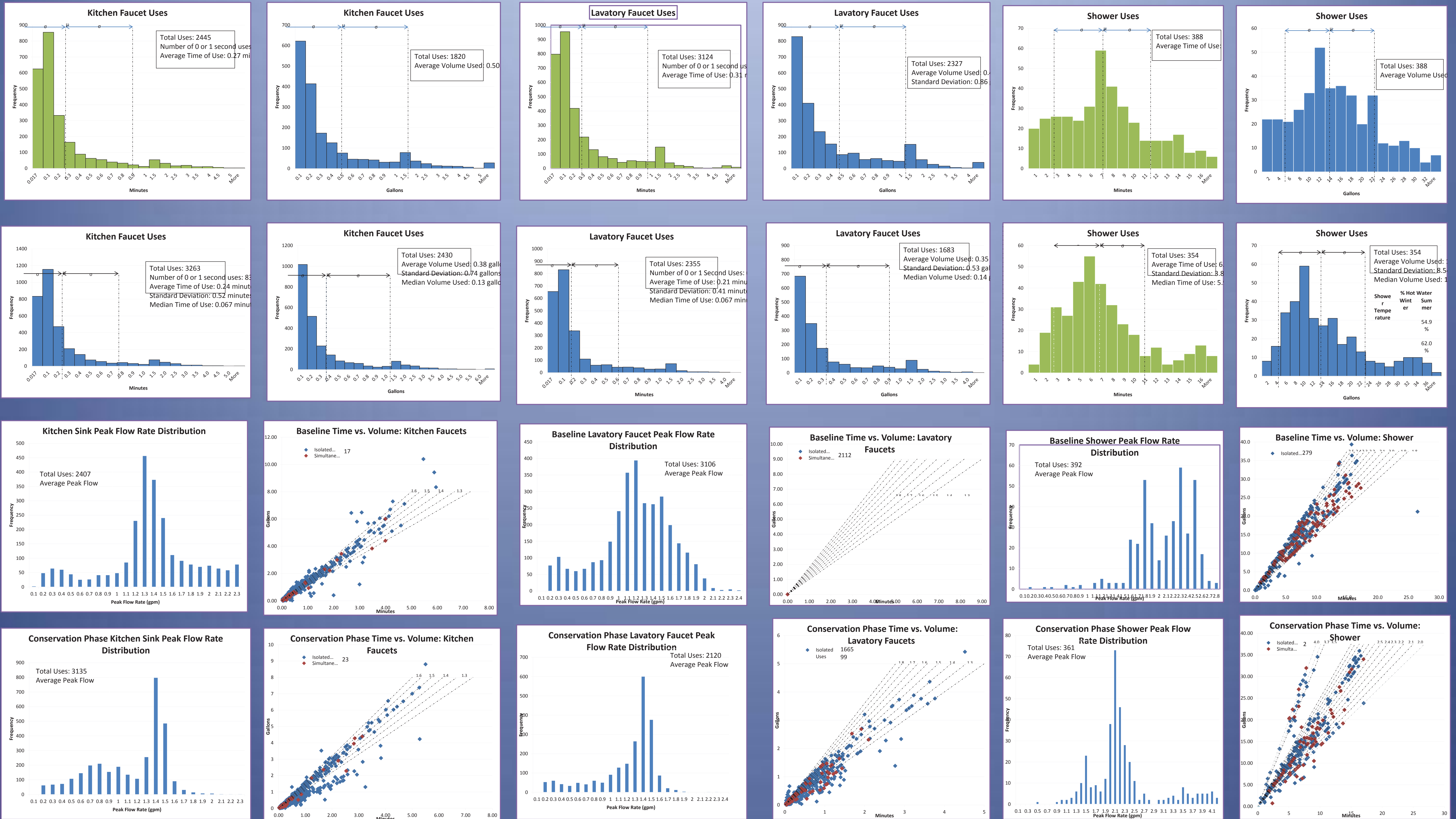


Home Water Use Study – Comparison of Baseline to Conservation Phase



Study Set-up

Four Homes - Indianapolis
 Baseline – December 2009 - January 2010
 Conservation - August – September 2010
 Kitchen Faucets – changed 2 homes to capacitance technology
 Lavatory Faucets – Changed 2.2 gpm to 1.5 gpm
 Showerheads – Changed 2.5 to 2.0 gpm

Overall Results

1. Significant Water Savings from Lavatory and Showerhead Flow Rate Reductions of 27% and 29% respectively
2. Touch Kitchen Faucets dropped Water Use 40%
3. For Lavatory and Kitchen Faucets, a significant proportion of the savings come because people do not open faucets fully most of the time.